

# DAMAGE, DISPLAYS AND DISASTERS

## Conserving Museum Collections

N. Mildwaters, ACR  
Conservation Manager, Otago Museum





*Ecce Homo de Elías García Martínez.*



# WHAT DOES CONSERVATION INVOLVE

**The preservation of cultural property for future generations.**

**Preventive Conservation** - All measures and actions aimed at avoiding and minimising future deterioration or loss. These measures and actions are indirect, they do not interfere with the materials or structures of the items and do not modify appearance. Preventive conservation includes, but is not limited to, appropriate measures and actions relating to storage, handling, packing and transportation, security, environmental management (light, humidity, pollution and pest control) and emergency planning.

**Remedial Conservation** - All actions directly applied to an item or group of items aimed at arresting current damaging processes, reinforcing their structure as well as potentially facilitating appreciation, understanding and use. These actions sometimes modify the appearance of the items but are based on a respect for the original materials.

# PREVENTIVE CONSERVATION

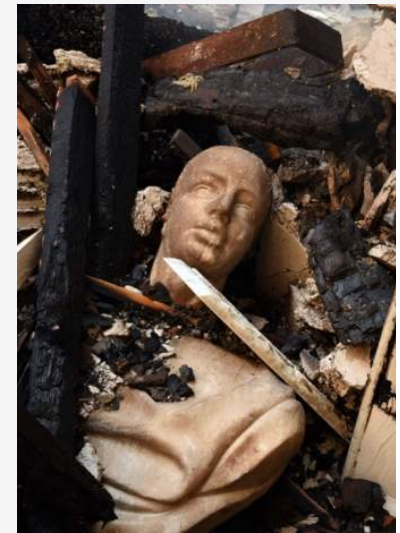














# REMEDIAL CONSERVATION



Before treatment

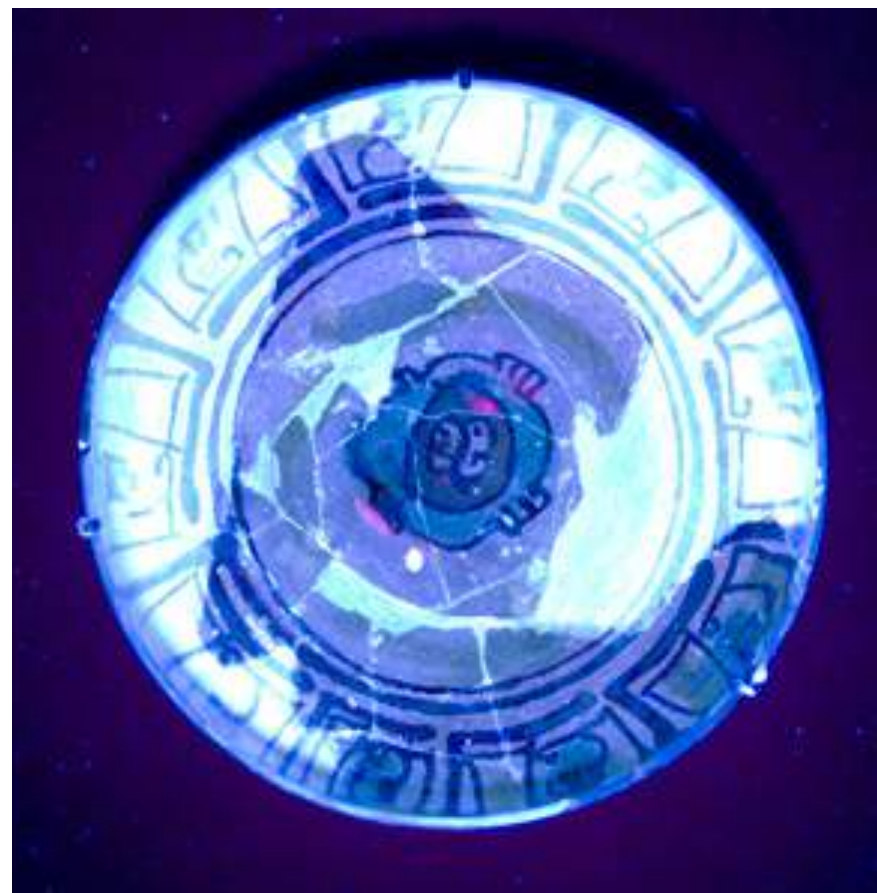


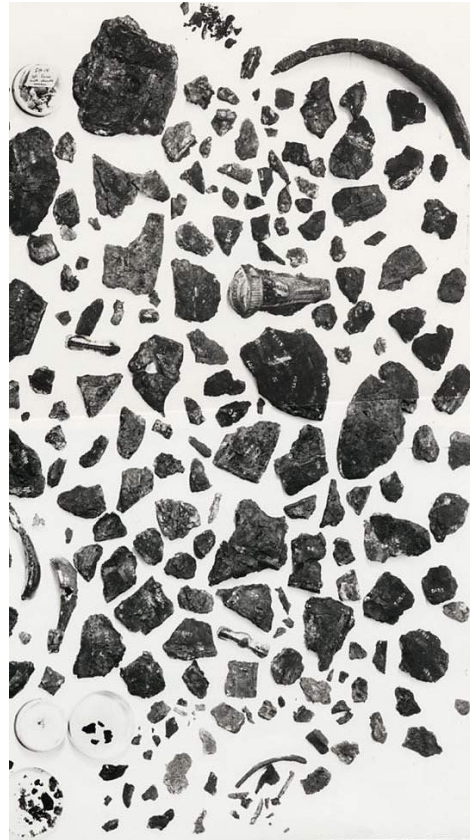
During treatment  
(after cleaning, during  
consolidation and filling)



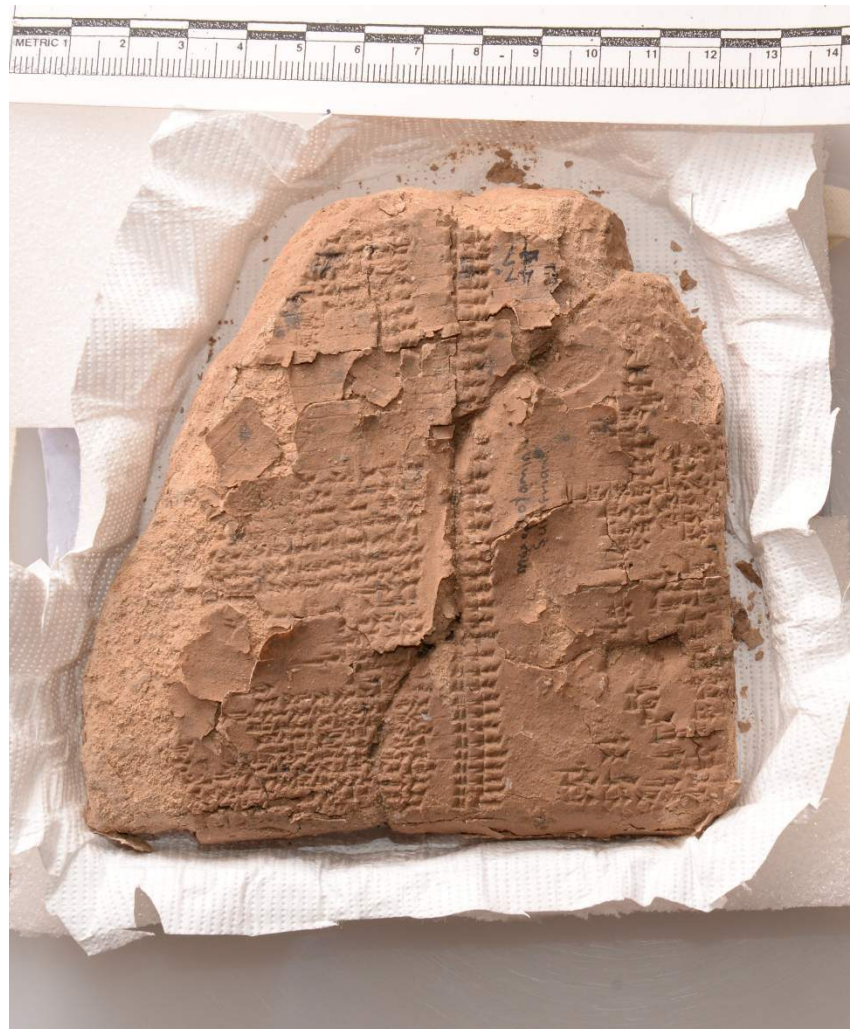
After treatment



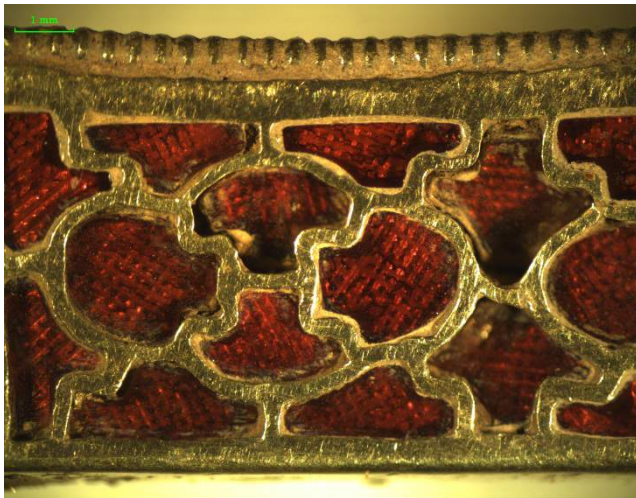




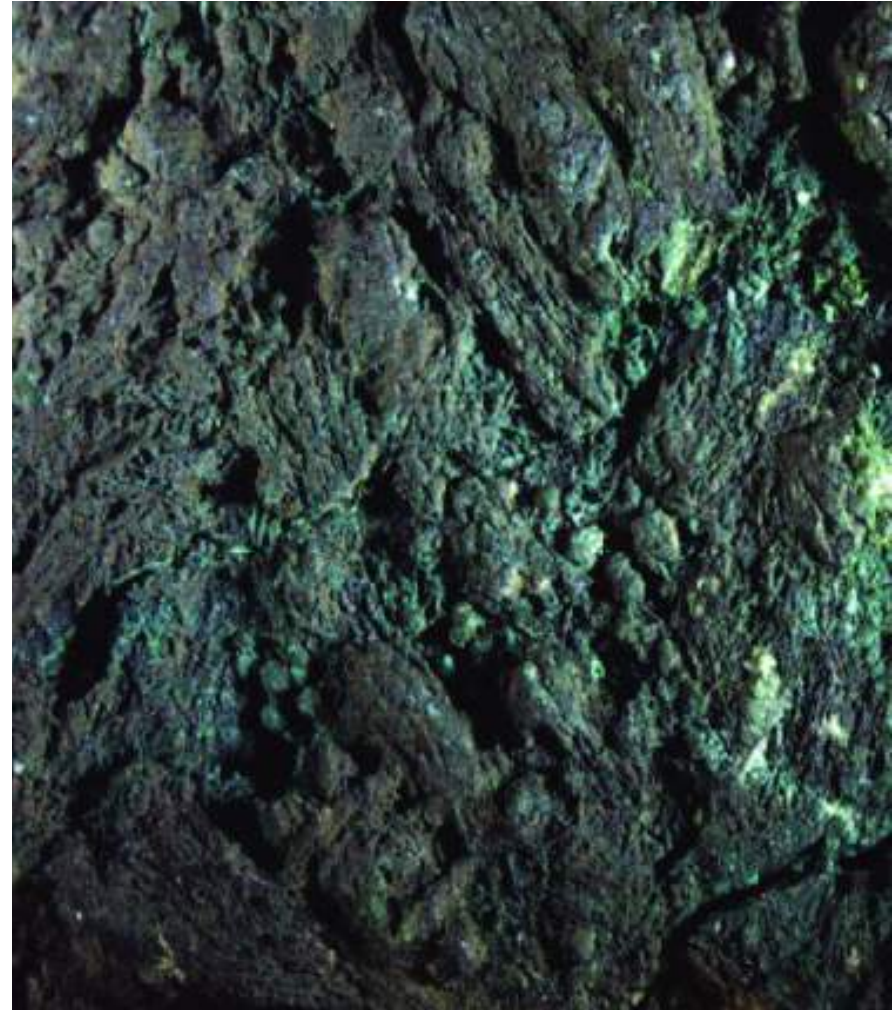


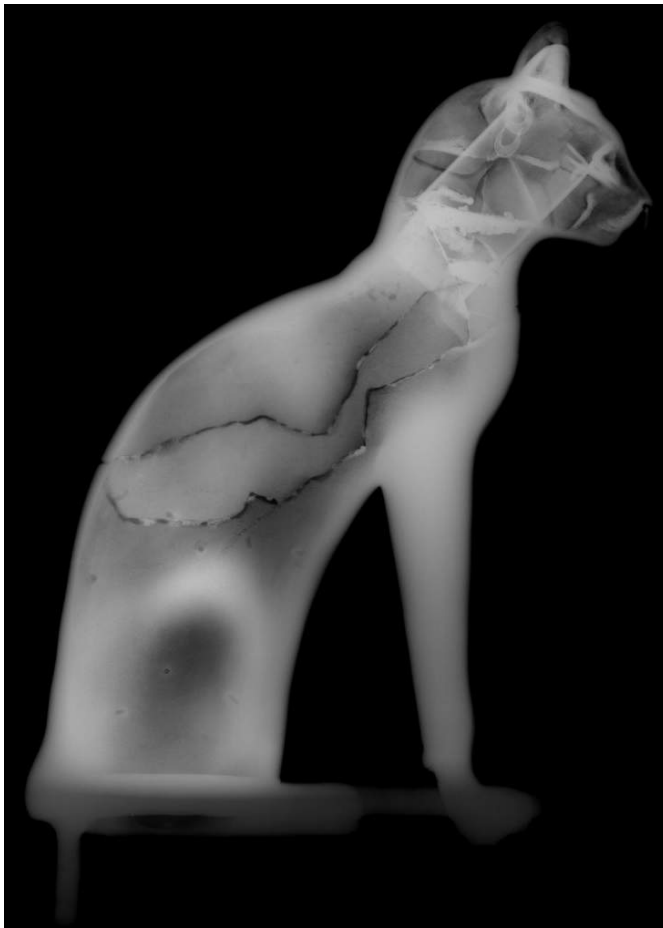




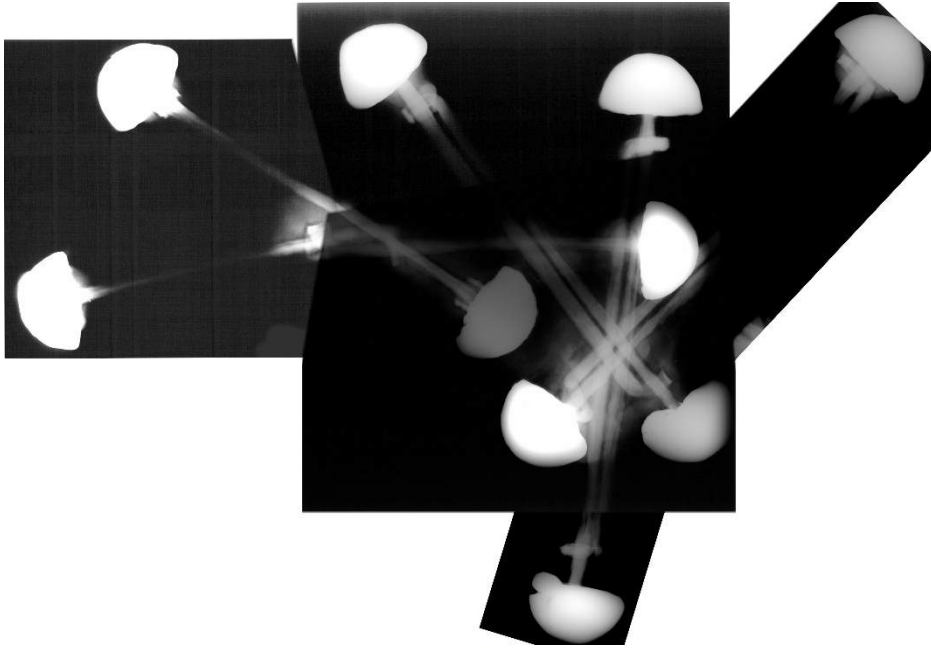




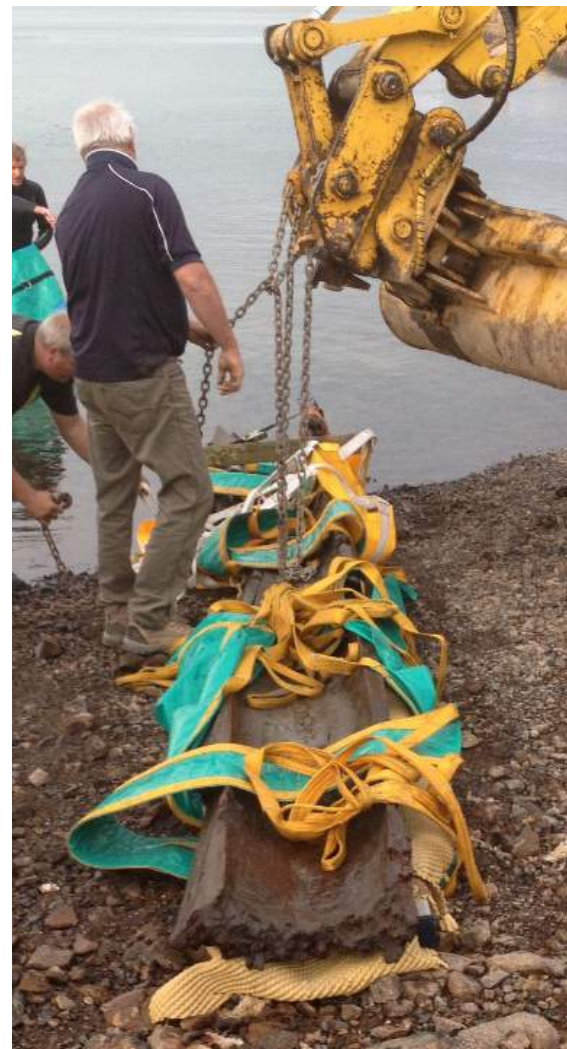














# RELATED CONSERVATION ACTIVITIES



# DAMAGE, DISPLAYS AND DISASTERS

## Conserving Museum Collections

N. Mildwaters, ACR  
Conservation Manager, Otago Museum

