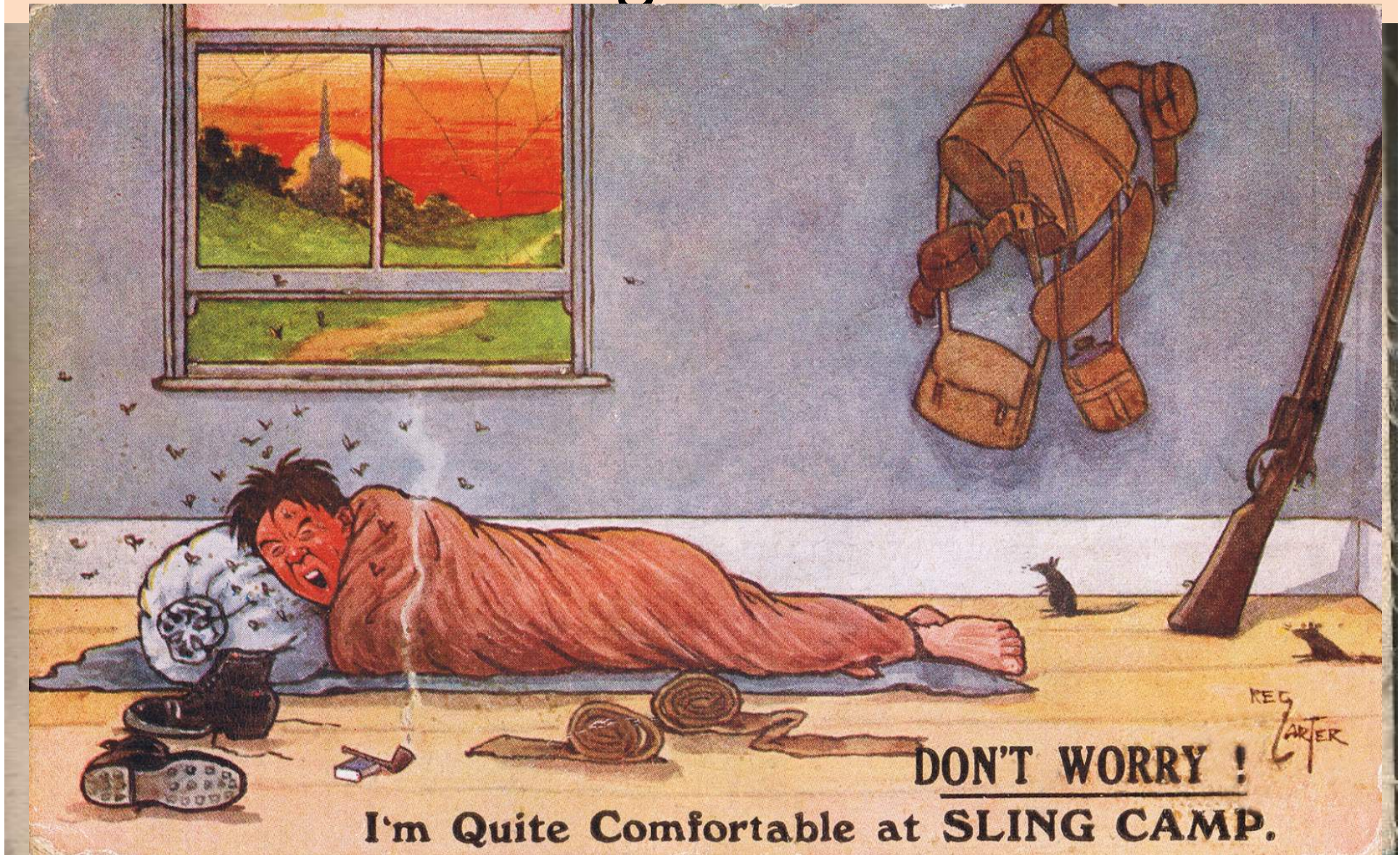


WW1 Letters and Diaries Transcription Programme



[illegible]

NOTHING is to be written on this side except the date and signature of the sender. Sentences not required may be erased. If anything else is added the post card will be destroyed.

I have been admitted into hospital.

I am being sent down to the base.

Letter follows at first opportunity.

Signature
only.

[Postage must be prepaid on any letter or post card addressed to the sender of this card.]

Sling Camp

Mar. 19. 18

POSTAGE.

Inland,

1d.

Foreign,

1d.

Dear Dan

Just a P. C. today

~~We~~ expect to leave for

France at almost any hour

so cannot write a letter for
want of time to do it in.

We just arrived back

from draft leave at

1.20 A. M. this morning.

We left London at nine

last night but had to

walk home. Ruddy

ST CARD.

THE ADDRESS ONLY TO BE
WRITTEN HERE.

Postage

of West-
100 stair
e seen on
high, and
each

Or it
might
look like
this

Piling Camp
England
Sept 3/1916

Dear Dace

I now take the pleasure in writing you a few lines to let you see that I haven't forgotten my old chums yet & hoping that it finds you all in the best of health & as it leaves me still in the best of health, & in very solid drill since I came to England my job Reg. 80 keeps us at it, The New Zealand Camps are a holiday compared with this camp, we are all keen to get away to France, I think we will be going to France in about a week's time; Jim & I are in different drafts now I am in the first draft out of the 10th & Jim is in the second lot so he will be about a week longer in this camp its hard luck getting parted but we may meet again in France I hope so anyway. By the time you get this letter I suppose I will be in the trenches & Perhaps have a hole in me by a shell or something or other, there is to be a big battle this week so we will soon see how things are going to go, Rumania will make a big difference she will help to

ST CARD.

POSTAGE.
Inland,
1d.
Foreign,
1d.

THE ADDRESS ONLY TO BE
WRITTEN HERE.

Postage

of West-
100 stair
e seen on
high, and
each

Sling Camp

M

Dear Dan

~~we~~ expected to

France at almost

so cannot write

want of time to

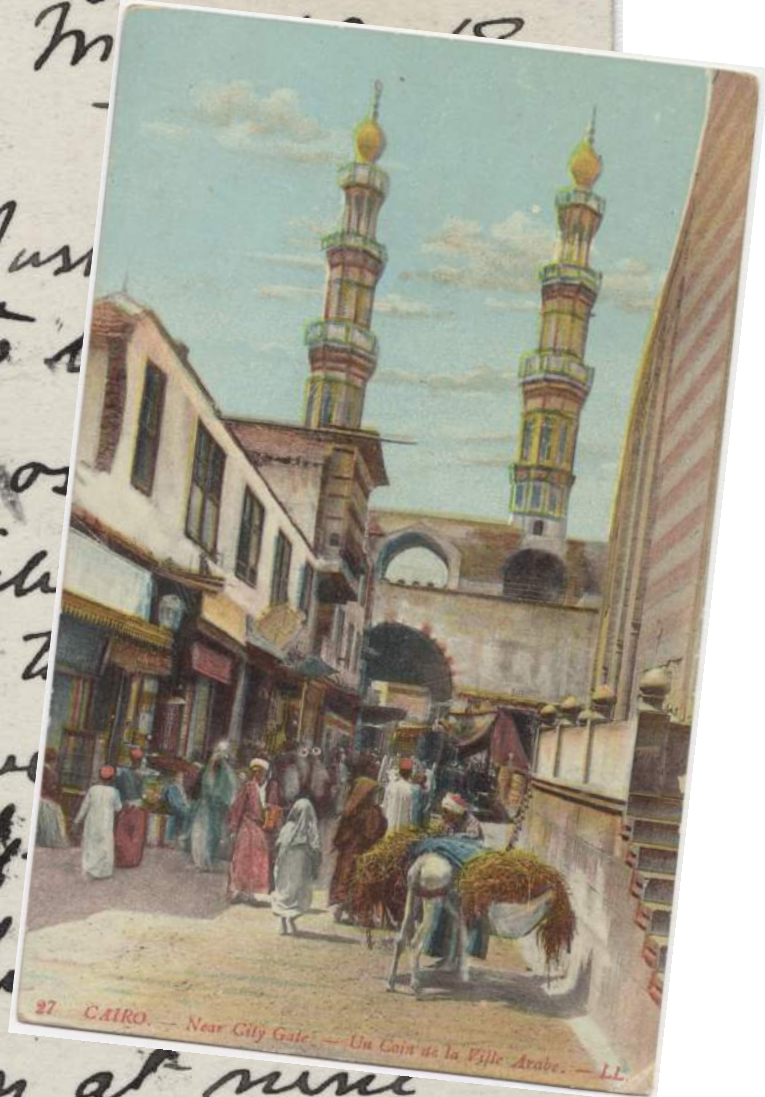
we just arrived

here from draft

1.2 A. M. the

We left London at nine

last night but had to
walk home Budd



Sling Camp Bulford – Chalk Kiwi



Bere Ferrers Station c. 1960

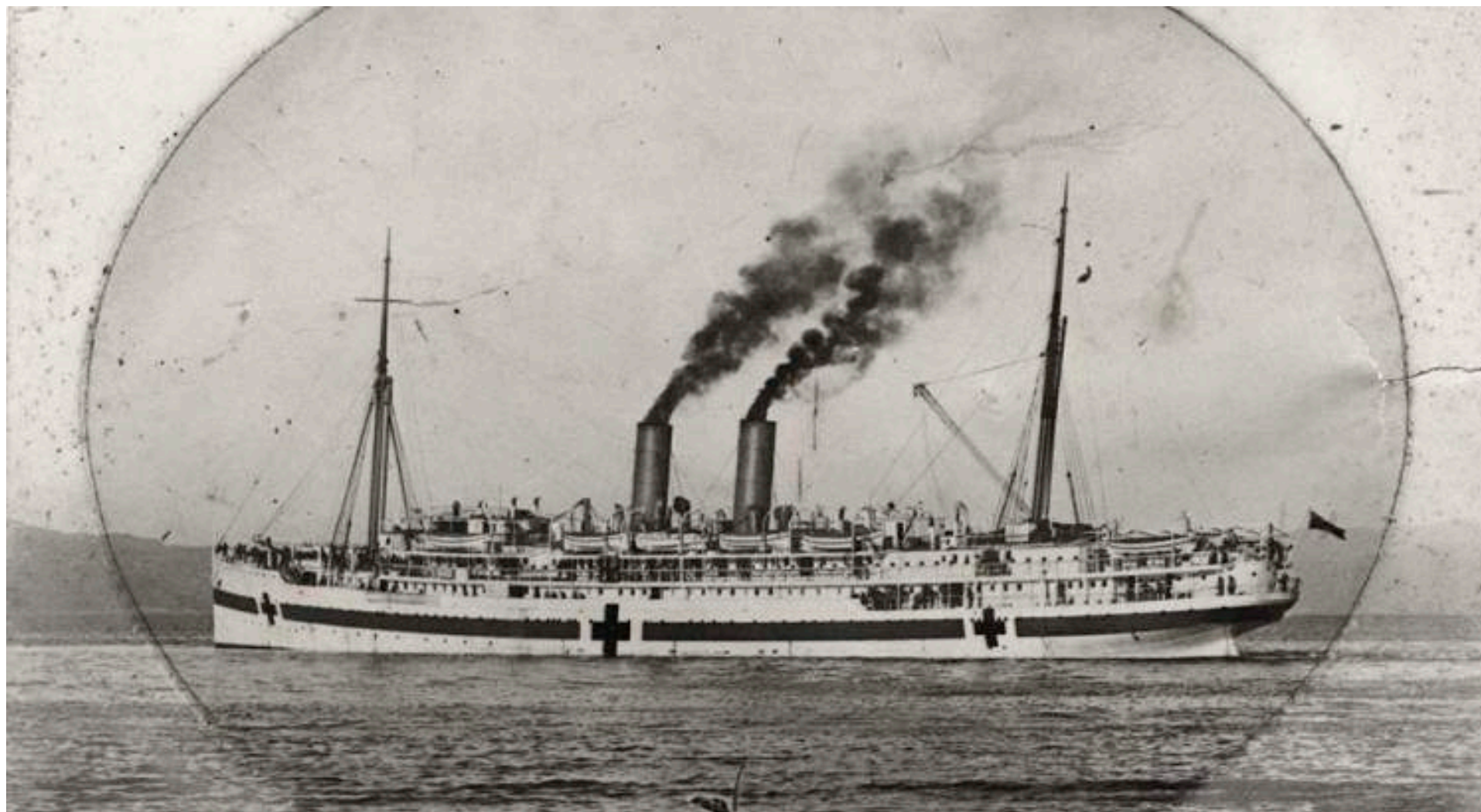


Minnie Johns Jeffery (1884-1963)
among the contingent of Nurses that
embarked on Hospital Ship No 1
Maheno 1915



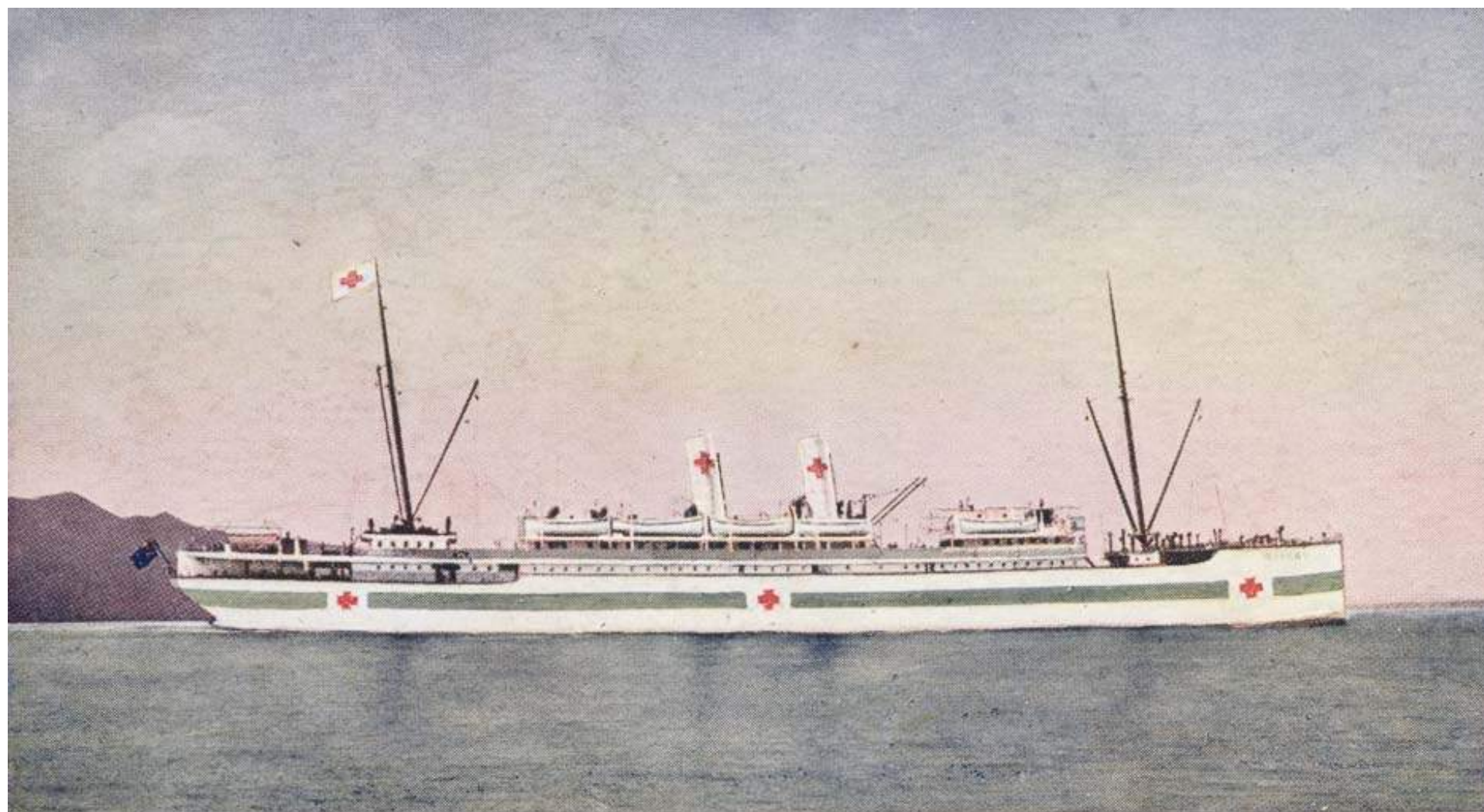
MINISTERING ANGELS IN TIME OF SUFFERING: THE NEW ZEALAND NURSES WHO WILL TEND OUR WOUNDED HEROES ON THE HOSPITAL SHIP MAHENO AND AT THE BASE HOSPITALS.

Hospital Ship No. 1 *Maheno*



Grand Oriental Hotel, Colombo





NEW ZEALAND HOSPITAL SHIP "MAHENO," 5282 tons.

Length, 400ft. Breadth, 50ft. 2in.

Captain, D. McLean.

One Operating Room, 20ft. x 15ft.; Preparation Room, 14ft. x 10ft.; Cot Lifts; Isolation Wards, Dispensaries, Steriliser for Surgical Dressings, Mortuary, Officers' Quarters, etc.

NZ Stationary Hospital, Egypt



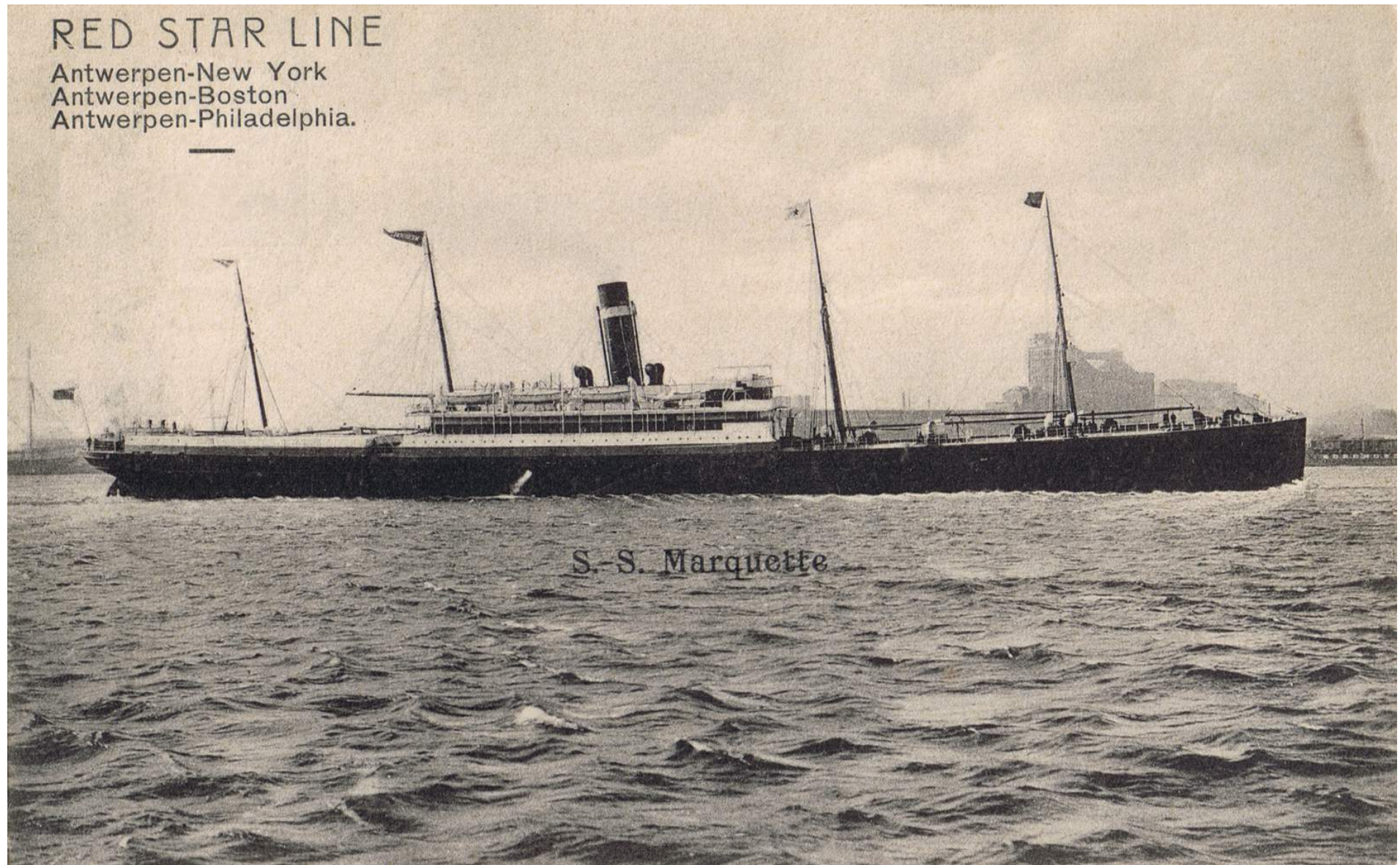
Port Said postcard WW1



Ambulance Train WW1



The ill-fated *SS Marquette*



Christchurch Tram: Propaganda 1915



Mansion House and Cheapside 1915



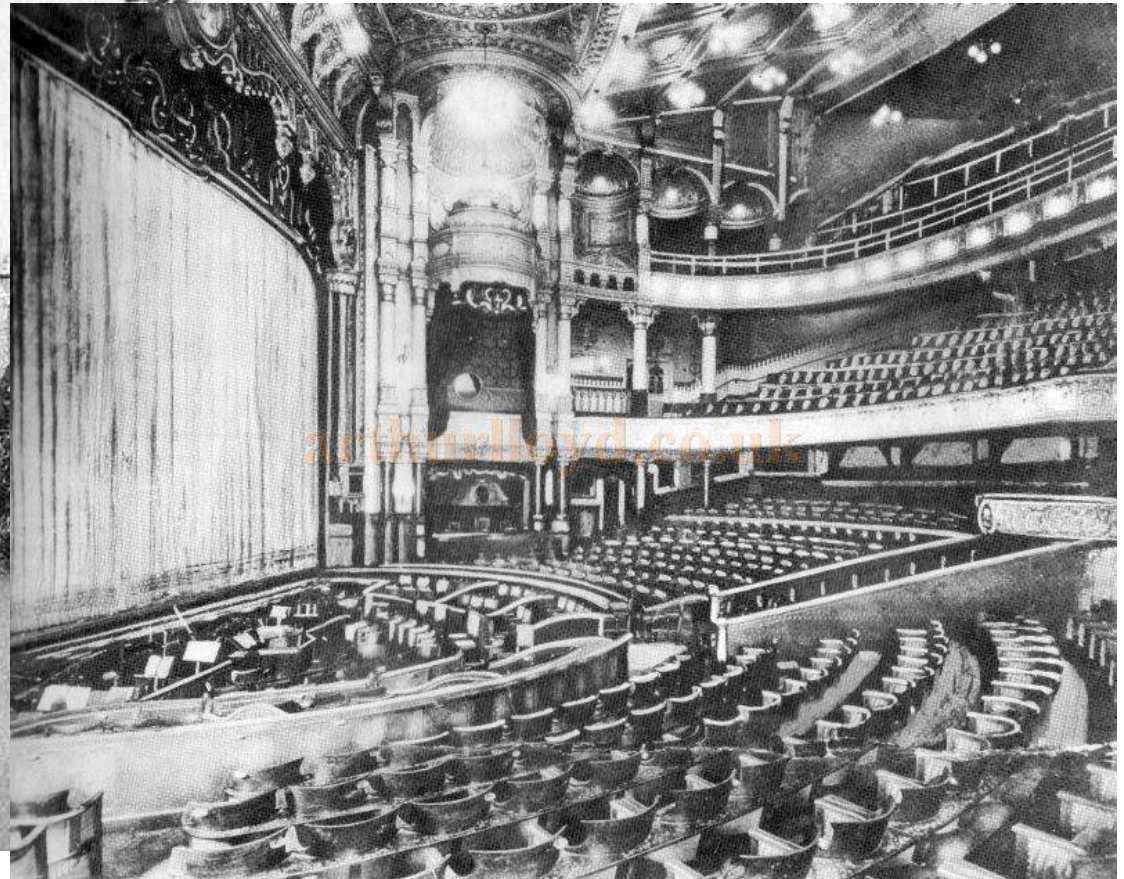
Carlton Restaurant, London



Major Fred
Waite *DSO*
(Engineers)



Hippodrome cnr of Leicester Square and Charing Cross Road



MILITARY SERVICE ACT, 1916

Every man to whom the Act applies will on Thursday, March 2nd, be deemed to have enlisted for the period of the War unless he is excepted or exempt.

Any man who has adequate grounds for applying to a Local Tribunal for a

CERTIFICATE OF EXEMPTION

UNDER THIS ACT

Must do so BEFORE
THURSDAY, MARCH 2

Why wait for the Act to apply to you?

Come now and join of your own free will.

You can at once put your claim before a Local Tribunal for exemption from being called up for Military Service if you wish.

ATTEST NOW

PRINTED BY THE PARLIAMENTARY PRINTING OFFICE, LONDON. PUBLISHED BY THE PARLIAMENTARY PRINTING OFFICE, LONDON. PUBLISHED BY THE PARLIAMENTARY PRINTING OFFICE, LONDON.



**"BE HONEST WITH
YOURSELF. BE CERTAIN
THAT YOUR SO-CALLED
REASON IS NOT A
SELFISH EXCUSE"**

LORD KITCHENER

ENLIST TO-DAY

PUBLISHED BY THE PARLIAMENTARY PRINTING OFFICE, LONDON. PUBLISHED BY THE PARLIAMENTARY PRINTING OFFICE, LONDON.

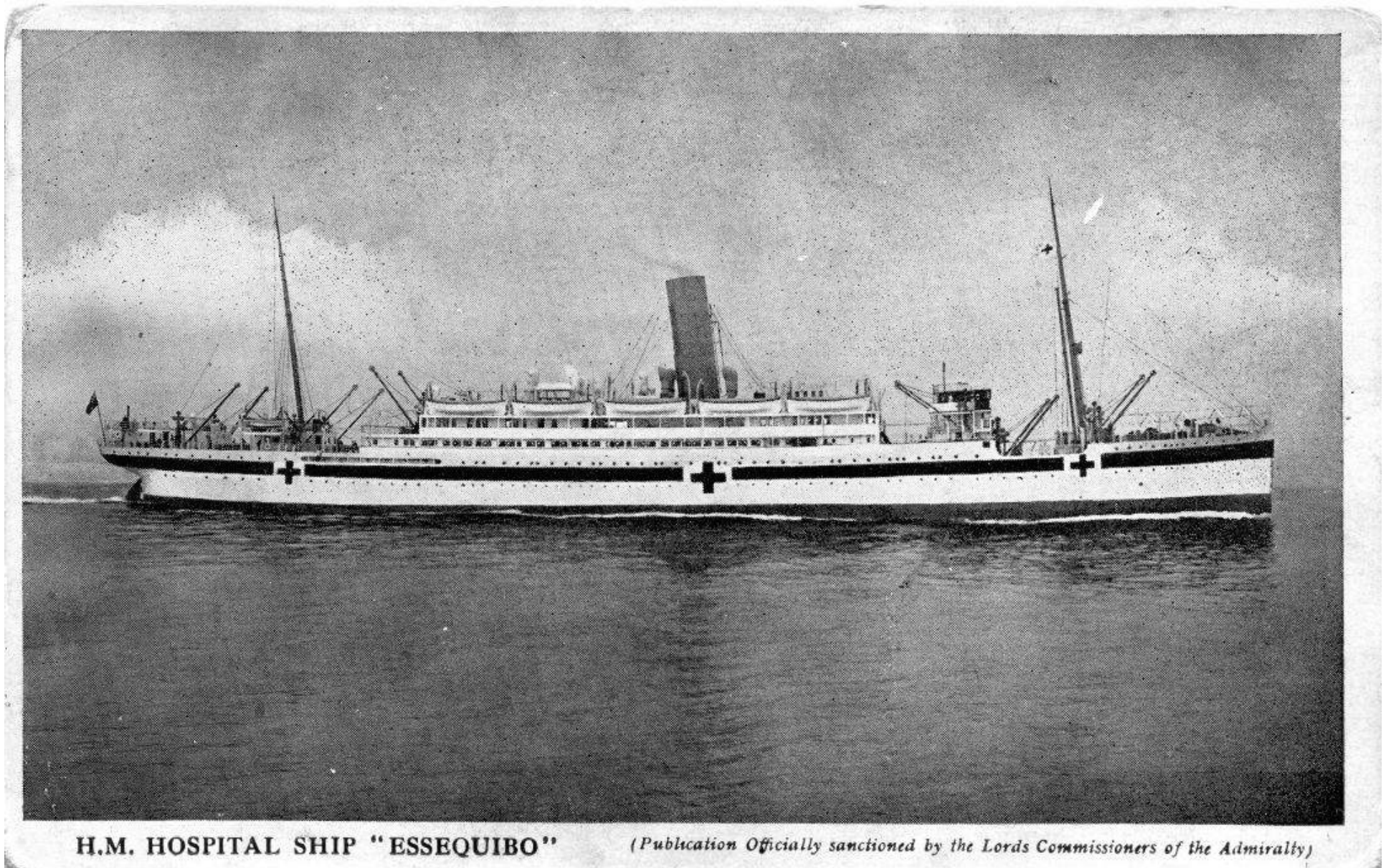
PRINTED BY BENNETT & CO., LTD., LONDON & NEW YORK.



Royal Visit to Hospital



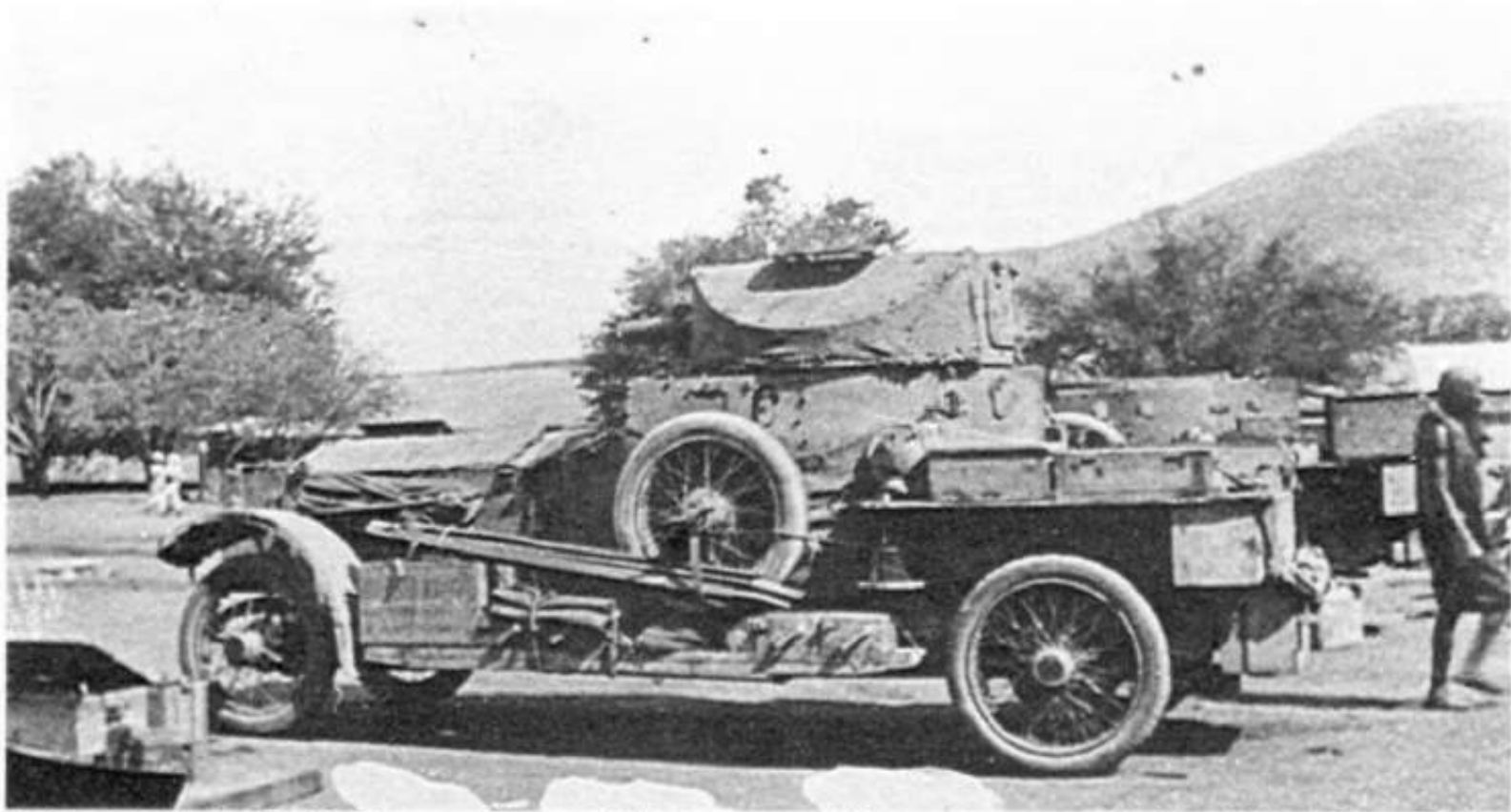
Hospital Ship "Essequibo"



H.M. HOSPITAL SHIP "ESSEQUIBO"

(Publication Officially sanctioned by the Lords Commissioners of the Admiralty)

Motoring North Africa WW1



A heavily laden Rolls-Royce of 10th (RN) Armoured Motor Battery at Voi in British East Africa. The durable armoured car was known as the 'kifaru' — rhinoceros — by the native askaris.

156

room on the horse for two: The poor man wrote the hint, and next thing, found myself on the horse, arriving at the Fort like a queen & not a bit puffed. Well, four armoured cars and the staff car were waiting for us, we were all divisioned off - Mr. Jiffeo & myself in ^{one} the armoured car - and away we set, a 17 mile ride on an African desert, as flat as a pancake, sand everywhere, but shrubs growing at intervals. We were shown the enemy's old ammunition works, nothing but ruins now, and the place pointed out later on where some Turkish officers had been captured only a few days previously. Guns were fired while we were in the cars, fired specially for our benefit, and we returned to the Fort about 6 p.m. after a glorious time, but just covered in dust. Two of the officers came for dinner, and I am staying up till 2 a.m. We have a few bad cases of paratyphoid on board. Easter Monday over.

Apr 15
Sergeant Brown is delighted that the cars have been on land. Then a m. from the Fort below had been on

And here this diary ends....