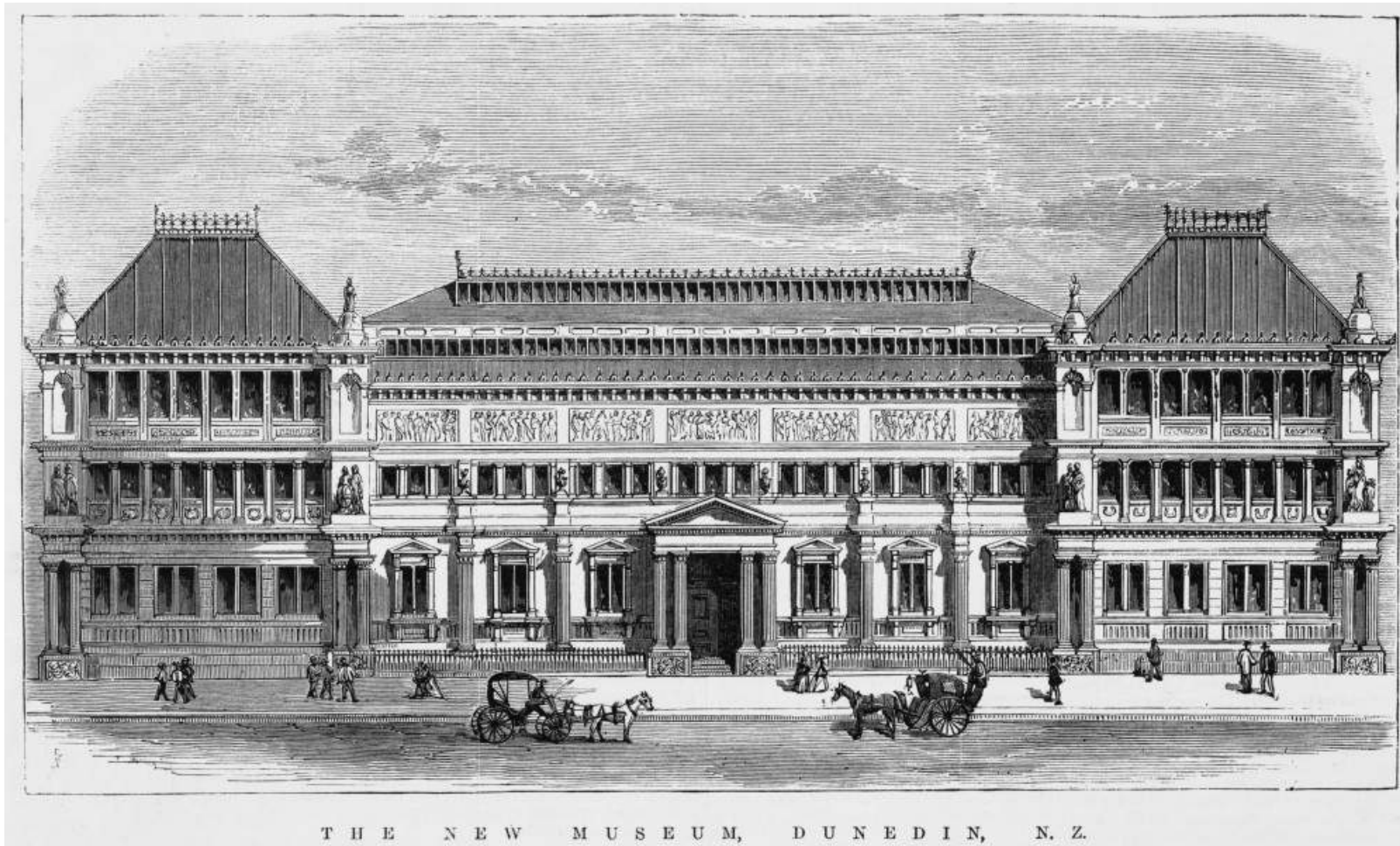


Skeletons in the Attic

Rosi Crane, Honorary Curator



Architect David Ross (1828-1908)
Reality did not quite match ambition

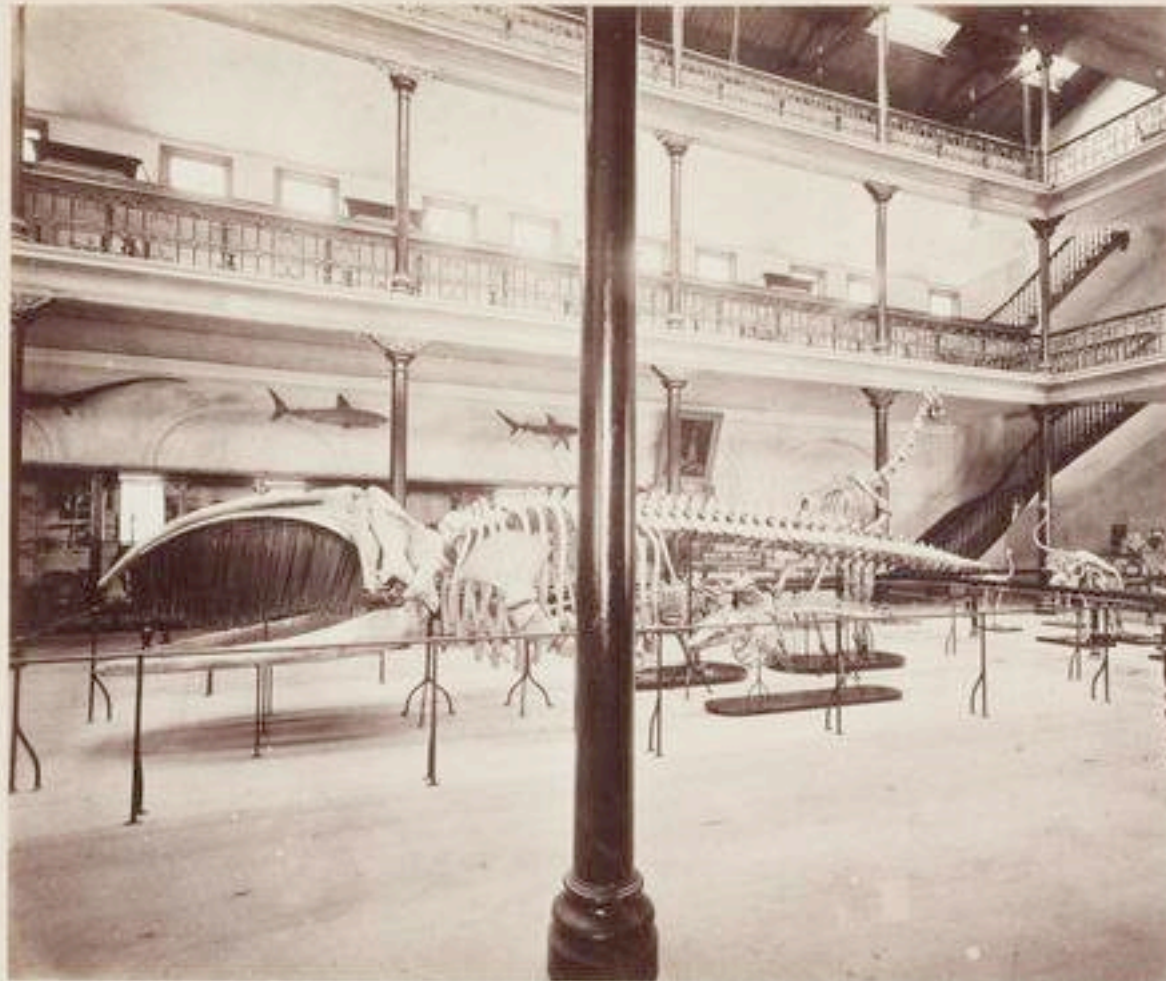


Otago University Museum in Great King Street

Captain Frederick Wollaston HUTTON
(1836-1905)

Curator Otago University Museum
1873-1879





Otago University Museum when it opened August 1877



Interior of Museum, Dunedin.





Some individual birds can be identified



Photo from 1937 with newly appointed Education Officer, G.A. Anderson
Arrow points to egret on display when 1877 Gallery opened



Kotuku

Also known as Egret or White heron

Photo taken 2013 in Otago Museum store



Otago University Museum about 1883

Professor Thomas Jeffery PARKER
(1850-1897)

Curator Otago University Museum
1880-1897

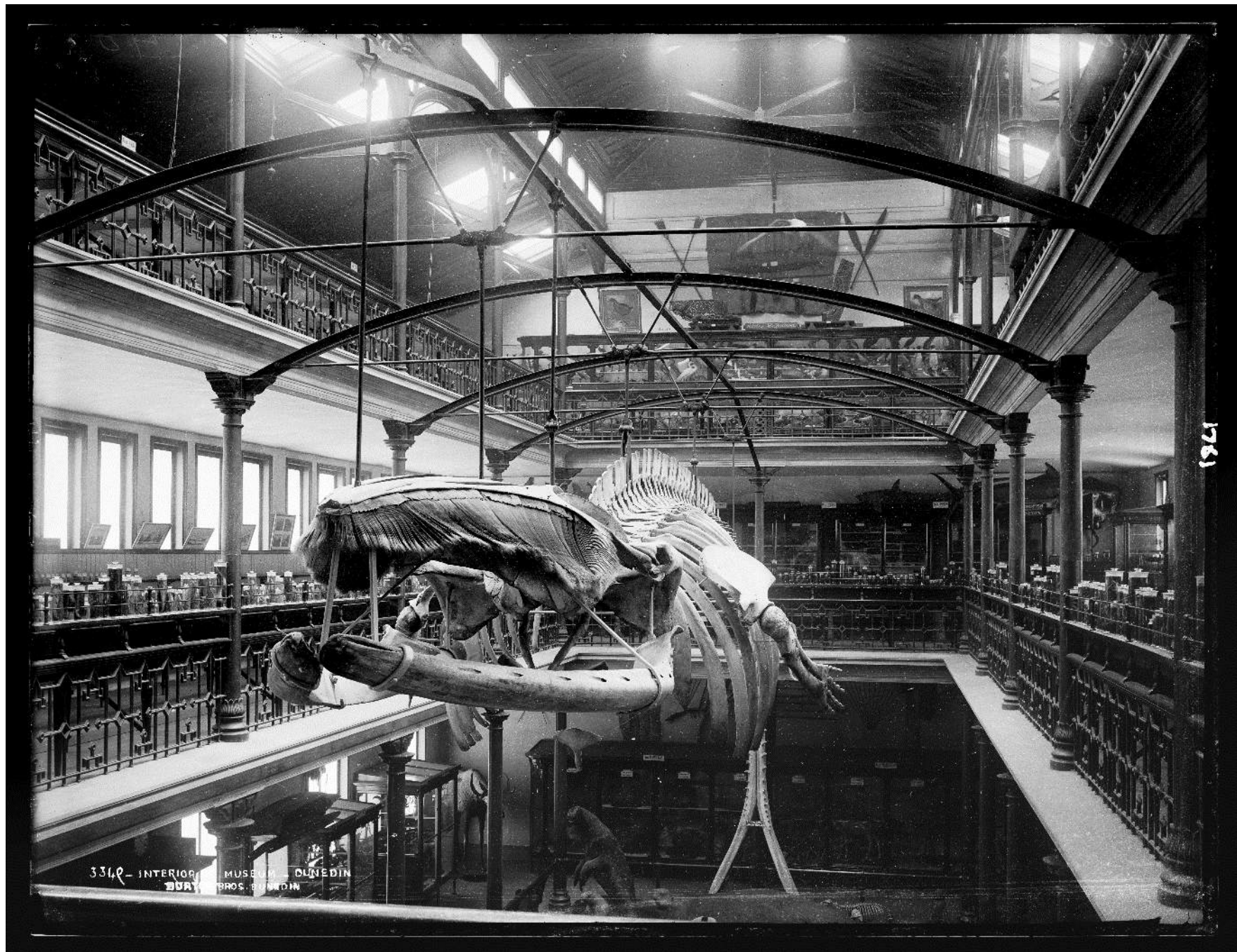
And

Professor of Biology at Otago
University
1880-1897





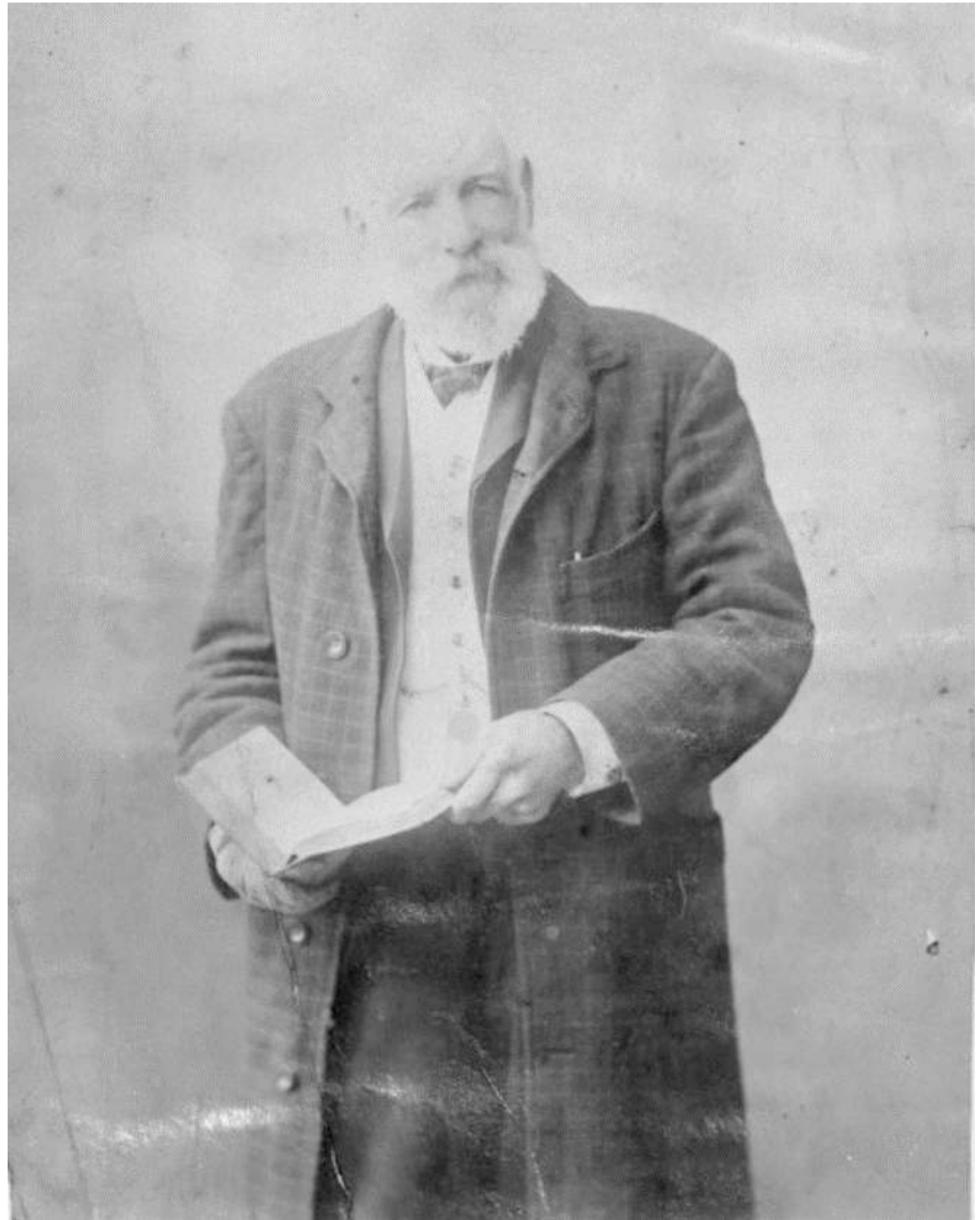
Otago University Museum about 1885



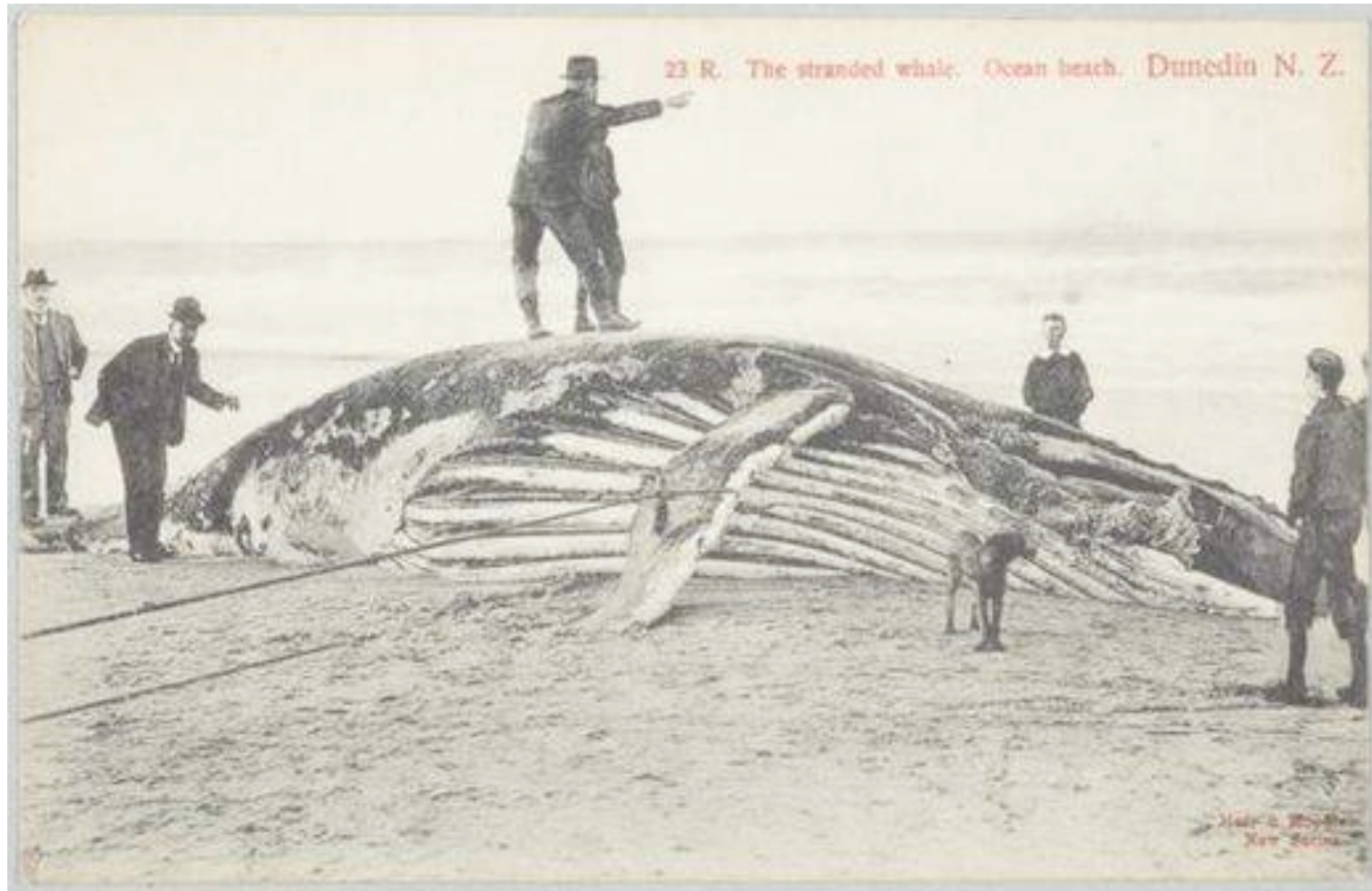
Skeleton of fin whale in Otago University Museum. Photo taken 1885

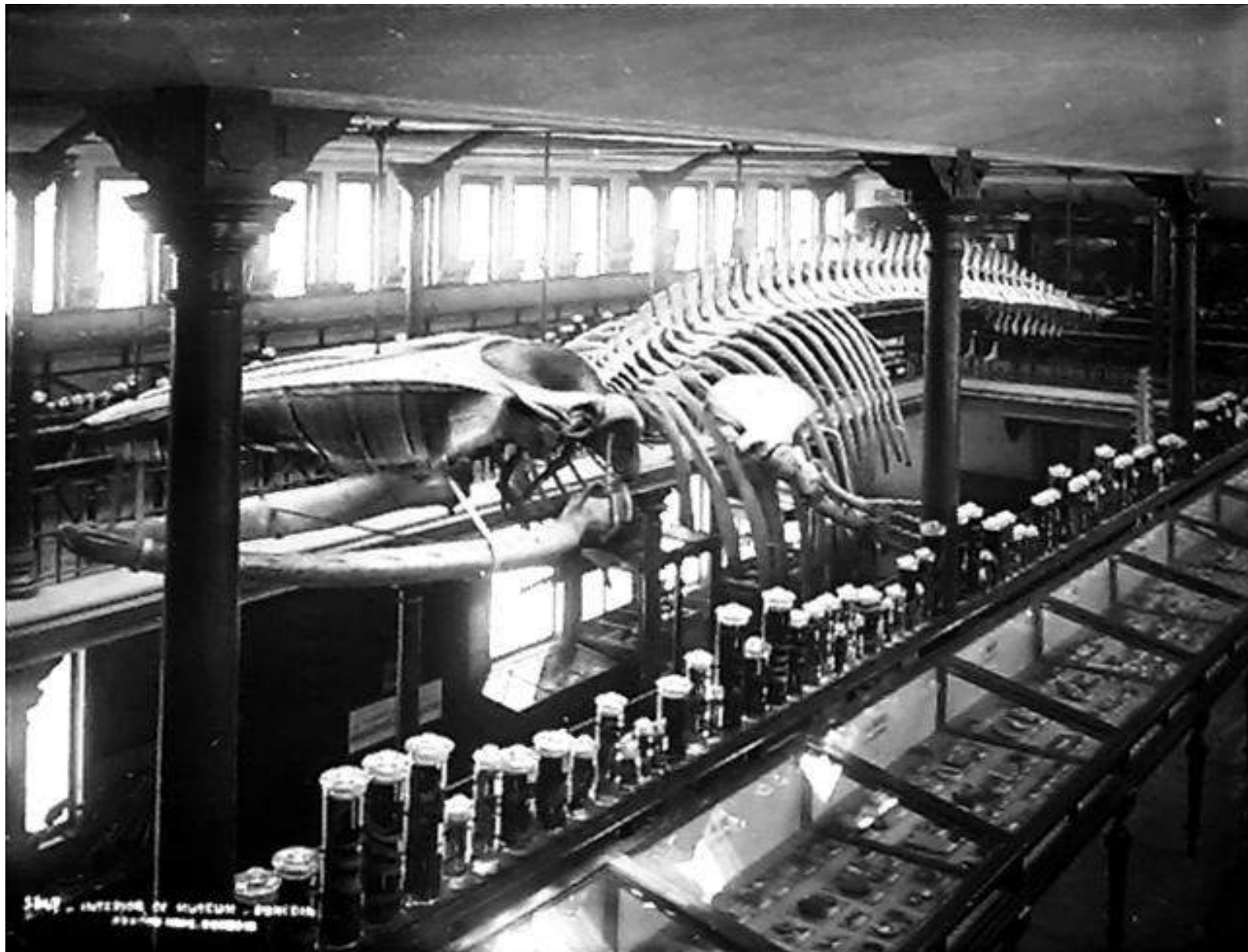
Captain William Jackson BARRY
(1819-1907)

Whaler and showman lecturer



Stranded whale, Ocean Beach, Dunedin, 1904
Not Captain Barry's Whale, but very similar.





Whale skeleton and jars of specimens. Photo taken 1885
Standards of health & safety have improved!

the balance is in beautiful
condition, & the sketch although
will be a very fine one: it
is to be hung from iron
pickets supported by the columns.

What size is your specimen? Mine
is 54 ft 6.

Letter from T.J. Parker, Dunedin to Julius von Haast, Christchurch.

22 August 1884.

(Alexander Turnbull Library MS-Papers-0037-126)

Pages of careful measurements

| <i>The Skull.</i> | Inches. |
|---|---------|
| Length in a straight line | 148 |
| Breadth at the squamosals (greatest breadth of skull) | 68 |
| " of condyles | 18½ |
| " of exoccipitals | 47½ |
| Length of supra-occipital | 80 |
| " of orbital process of frontal | 26 |
| Breadth of " " " , at base | 29½ |
| " " " " , at outer end | 15½ |
| Length of nasal | 11 |
| Breadth of both nasals, posterior end | 4½ |
| " " " anterior " | 9½ |
| Length of beak from middle of curved border of maxilla to tip of premaxilla | 102½ |
| Length of maxilla | 113 |
| Projection of premaxilla beyond maxilla | 10 |
| Greatest width of nasal apertures | 14 |
| Breadth of both maxilla at posterior end | 15 |
| " " " across orbital process (following the curve) | 73 |
| " beak at base, following the curve | 54 |
| " " middle " " | 26½ |
| " maxilla at same point " | 8½ |
| " premaxilla " " | 4 |
| Length of mandible in a straight line | 144 |
| Height of " at coronoid process | 15½ |
| " at middle | 10½ |
| Amount of curve of mandible, i.e., greatest distance of inner surface from a straight line between the ends | 18½ |
| Length of jugal in a straight line | 12½ |
| Width of jugal at anterior end | 6 |
| " " posterior " | 2 |
| " " narrowest point | 1½ |
| Amount of curve of jugal (measured as for mandible) | 2½ |
| Length of lacrymal in a straight line | 9½ |
| Greatest breadth of lacrymal | 3½ |
| Length of tympanic | 5½ |
| " " including external process | 13 |
| Breadth | 4½ |
| Thickness | 2½ |

The Vertebral Column.—

Vertebral Formula :—C. 7 : Th. 15 : L. 15 : C. 17 + 8 (?) = 62 (?)

| Dimensions in inches. | Greatest Height. | Greatest Width. | of Body. | | | of Neural Spine. | | of Transverse Process. | | | of Foramina of trans. process. | of Neural Canal. | | of Metapophyses. | Height of Hypapophyses. |
|----------------------------|------------------|-----------------|----------|-------|-----------|------------------|----------------|------------------------|---------------------------|-------------------------------------|--------------------------------|------------------|--------|------------------|-------------------------|
| | | | Height | Width | Thickness | Length | Greatest width | Length | Greatest width (vertical) | Greatest breadth (antero-posterior) | | Height | Width. | Height. | |
| Cervical Vertebrae— | | | | | | | | | | | | | | | |
| I. | 14½ | 22 | 3 | 14 | 3 | 3 | 4 | 3½ | 5 | .. | .. | 8 | 5 | .. | .. |
| II. | 14½ | 27 | 9½ | 14 | 3 | 2 | 4½ | 8 | 11 | .. | 7 | 5½ | 6½ | .. | .. |
| III. | 12½ | 25 | 7½ | 12 | 1½ | 1 | 1½ | 7 | 10½ | .. | 6½ | 6 | 8 | .. | .. |
| IV. | 12½ | 25 | 7½ | 11½ | 1½ | 1½ | 1½ | 7 | 10 | .. | 6½ | 6½ | 8 | .. | .. |
| V. | 12½ | 25 | 7½ | 11 | 1½ | 1½ | 1½ | 7½ | 10 | .. | 6½ | 6½ | 8 | .. | .. |
| VI. | 13½ | 26 | 7½ | 11 | 2½ | 2 | 1½ | 8 | 10½ | .. | 6½ | 6½ | 8 | .. | .. |
| VII. | 14 | 25 | 7½ | 11 | 3 | 2½ | 1½ | 8 | 8 | .. | .. | 3½ | 8½ | .. | .. |
| Thoracic Vertebrae— | | | | | | | | | | | | | | | |
| I. | 15 | 25 | 7½ | 11 | 3 | 3½ | 2½ | 7½ | 5 | .. | .. | 3½ | 8½ | .. | .. |
| III. | 18 | 25 | 7½ | 12 | 5 | 6½ | 5 | 9½ | 7 | .. | .. | 5 | 7½ | .. | .. |
| V. | 21 | 31 | 7 | 11½ | 6½ | 8½ | 7 | 11 | .. | 6 | .. | 6 | 6½ | 1½ | 4 |
| VII. | 23 | 34 | 7½ | 11 | 7½ | 10 | 8 | 11½ | .. | 7 | .. | 6 | 5 | 1 | 4 |
| IX. | 23½ | 35 | 7½ | 11 | 8 | 10½ | 8 | 12 | .. | 7½ | .. | 5½ | 4½ | 1½ | 4½ |
| XI. | 24 | 36 | 7½ | 11½ | 8½ | 10½ | 7½ | 12 | .. | 7½ | .. | 5½ | 4½ | 2 | 4½ |
| XIII. | 24½ | 37 | 8 | 12 | 8½ | 11 | 7½ | 12 | .. | 7 | .. | 5 | 5½ | 2 | 4½ |
| XV. | 25 | 34 | 8½ | 12 | 9 | 11½ | 7½ | 11½ | .. | 5½ | .. | 5½ | 3½ | 2 | 4 |
| Lumbar Vertebrae— | | | | | | | | | | | | | | | |
| II. | 26 | 34 | 8½ | 11½ | 9 | 13 | 7½ | 11 | .. | 6 | .. | 5½ | 5½ | 2½ | 4½ |
| IV. | 26½ | 35 | 9 | 12 | 9½ | 12½ | 7 | 11 | .. | 6 | .. | 4½ | 4 | 2 | 4½ |
| VI. | 27 | 34 | 9½ | 12½ | 9½ | 13½ | 7 | 12 | .. | 7 | .. | 4½ | 4 | 2 | 4½ |
| VIII. | 27½ | 33½ | 9½ | 12½ | 10 | 14½ | 6 | 12 | .. | 7 | .. | 4 | 4½ | 2½ | 4½ |
| X. | 27½ | 34 | 10 | 12 | 10 | 14½ | 7 | 11 | .. | 6½ | .. | 4 | 4 | 2½ | 4½ |
| XII. | 27 | 33 | 10½ | 13 | 10½ | 14½ | 7½ | 10 | .. | 7 | .. | 4 | 4 | 2½ | 4½ |
| XIV. | 27 | 32 | 10½ | 13 | 11 | 13 | 8 | 9½ | .. | 6½ | .. | 4½ | 3½ | 1½ | 3½ |
| Caudal Vertebrae— | | | | | | | | | | | | | | | |
| I. | 27½ | 28 | 11½ | 13½ | 11½ | 12 | 7½ | 7 | .. | 7 | .. | 4½ | 3½ | 1½ | 3½ |
| III. | 27 | 26 | 11½ | 13½ | 11½ | 10½ | 6½ | 6½ | .. | 6½ | .. | 4 | 3 | 1½ | 1 |
| V. | 22½ | 24 | 12 | 13½ | 11½ | 6½ | 5 | 5 | .. | 5 | .. | 3½ | 2½ | 1½ | 1½ |
| VII. | 20½ | 19 | 12 | 14 | 11½ | 5 | 3½ | 2½ | .. | 6 | .. | 2½ | 2 | 1½ | 1½ |
| IX. | 17½ | 16 | 12 | 13 | 11 | 4 | 2½ | 2 | .. | 6 | .. | 2 | 1½ | 1½ | 2 |
| XI. | 16½ | 14 | 11 | 11½ | 11 | 2½ | 1½ | Reduced to mere ridge | | | .. | 1½ | 1½ | 1½ | 2 |
| XIII. | 12½ | 11 | 10½ | 10 | 9½ | 1 | 1 | .. | .. | .. | .. | 1 | 1 | 1½ | 2½ |
| XV. | 10 | 8½ | 8 | 8½ | 6½ | .. | .. | .. | .. | .. | .. | .. | .. | .. | .. |
| XVII. | 7 | 6½ | 7 | 6½ | 4½ | .. | .. | .. | .. | .. | .. | .. | .. | .. | .. |

Extract from: 'Notes on the Skeleton and Baleen of a Fin-Whale (*Balaenoptera musculus* ?) recently acquired by the Otago University Museum'
by T.J. Parker. *Transactions of the New Zealand Institute*, vol. 17, 1884

TRANSACTIONS
OF THE
NEW ZEALAND INSTITUTE
1884

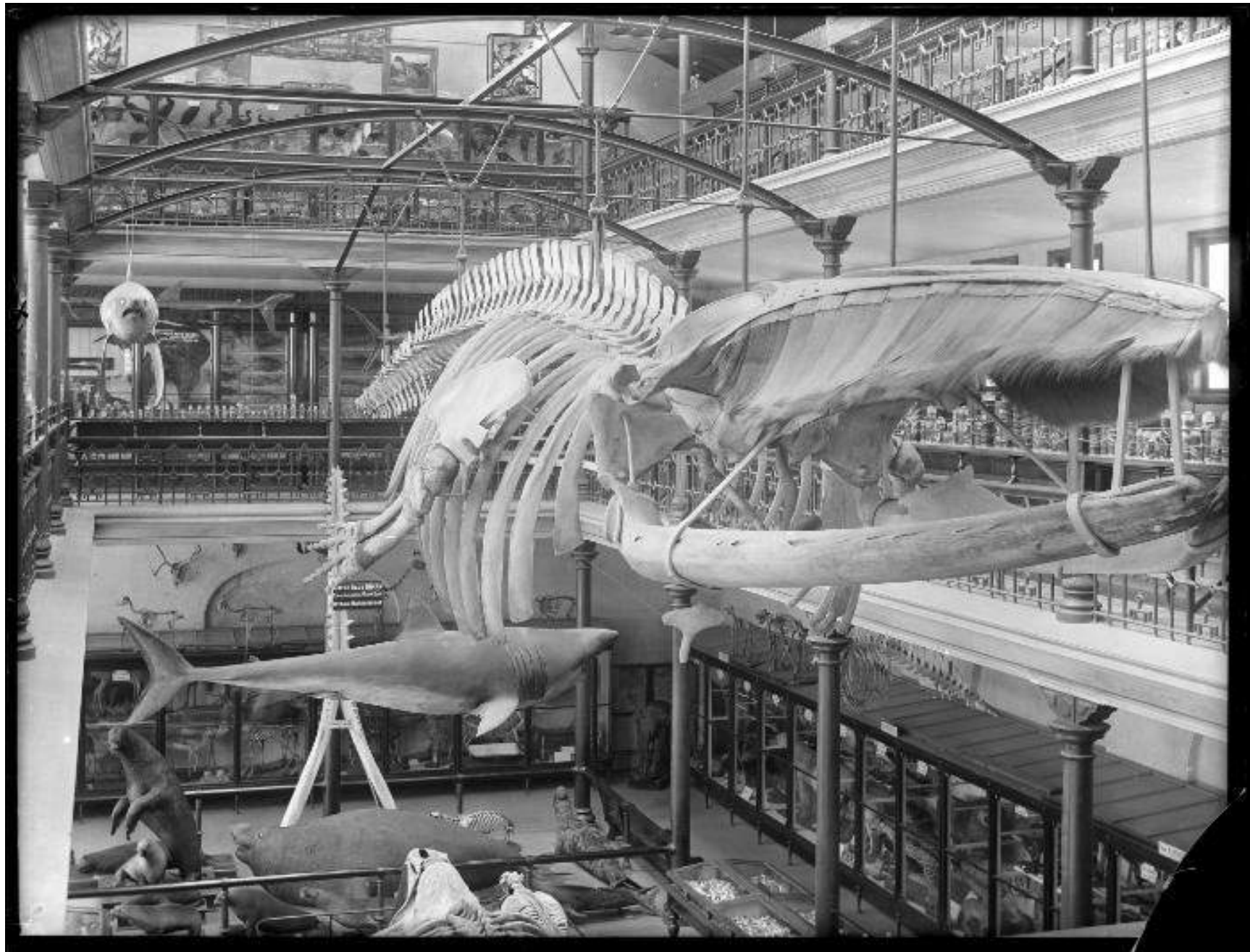
I. — ZOOLOGY.

ART. I.—*Notes on the Skeleton and Baleen of a Fin-whale (Balænoptera musculus?) recently acquired by the Otago University Museum. By T. JEFFERY PARKER, B.Sc. Lond., Professor of Biology in the University of Otago.*

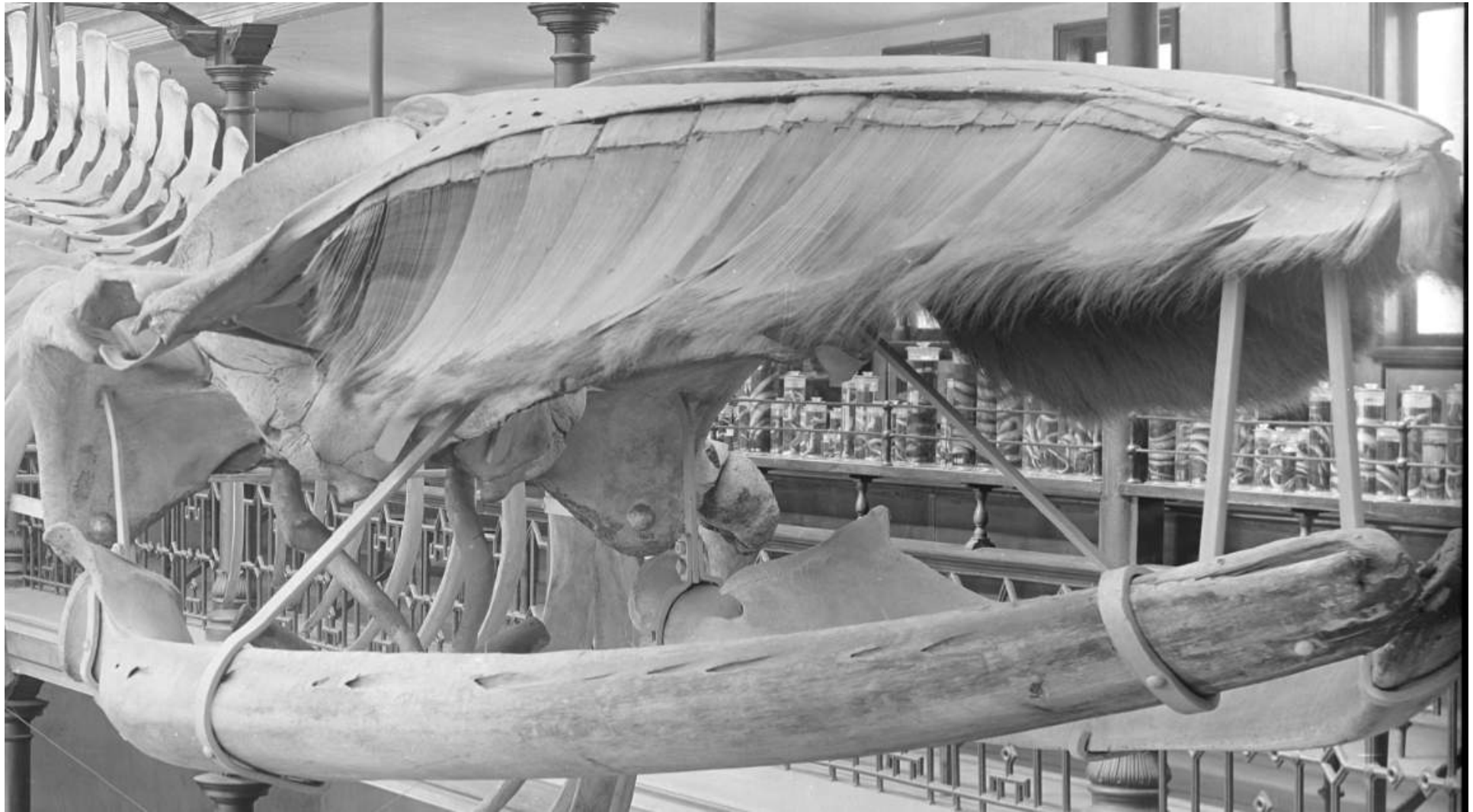
[*Read before the Otago Institute, 14th October, 1884.*]

Plate VI.

RATHER more than a year ago, a large whale's skeleton was exhibited in many parts of the colony by Captain Jackson Barry, who finally brought it to Dunedin. On visiting the shed where the bones were roughly set up, I found the animal to be a *Balænoptera*, a genus hitherto not represented in this Museum; and, as the number of bones missing was comparatively small, and the baleen was perfect, I entered into negotiations with Mr. Barry, with the ultimate result of securing the specimen as soon as it



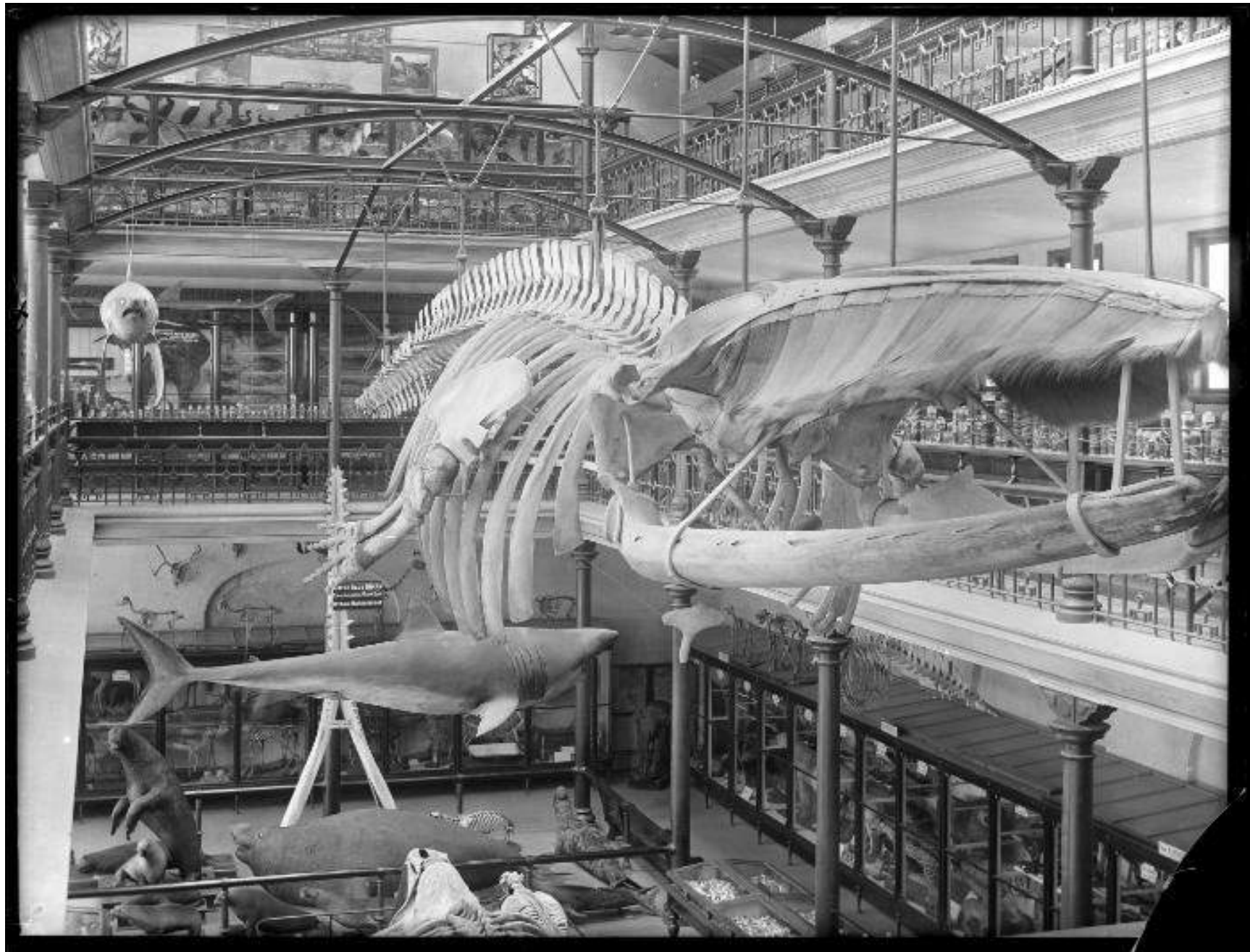
Skeleton of whale and much else as well. Photo taken after 1886.



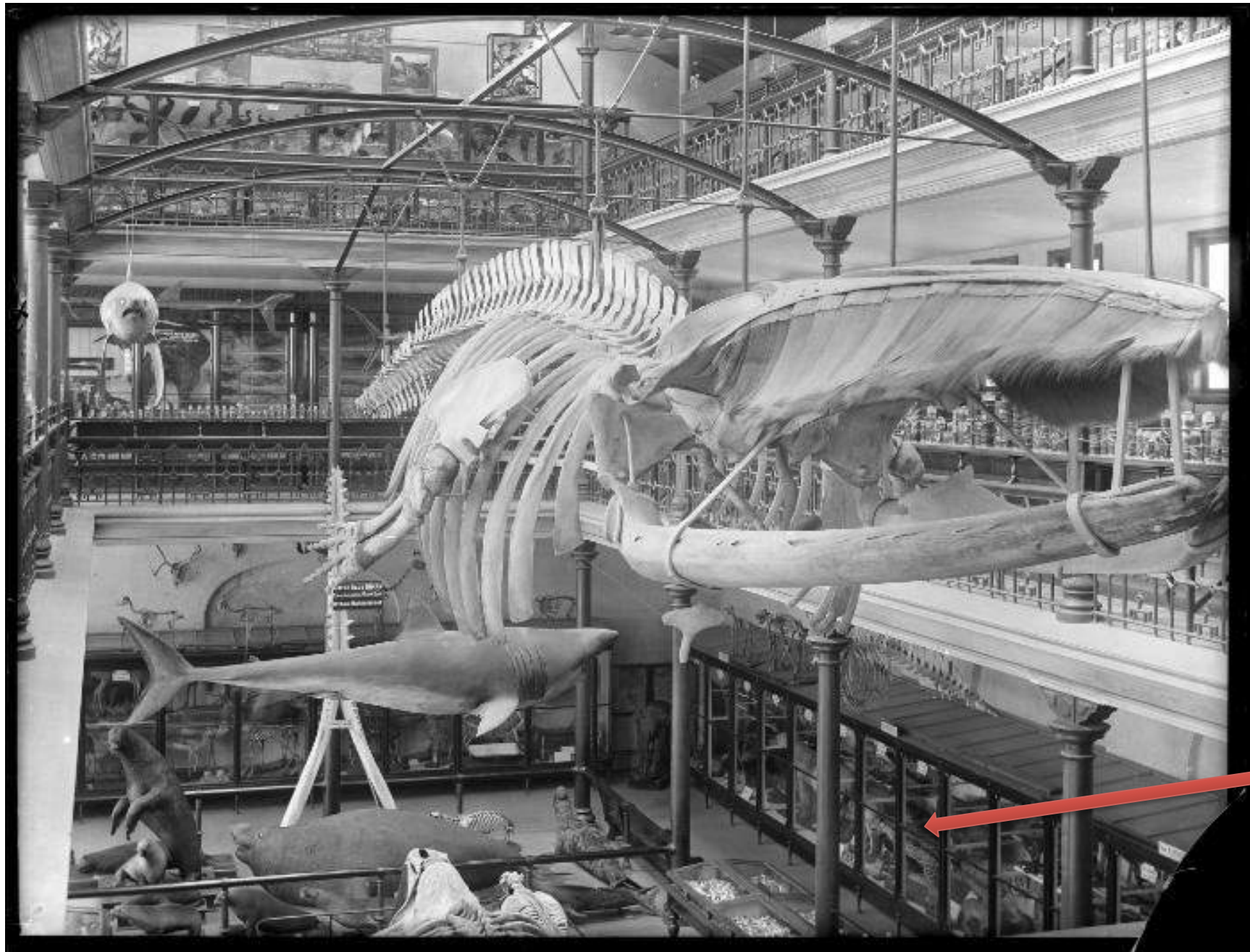
Iron cradle designed by Francis John Bourne, museum articulator



Fin whale has remained in place since 1885.
Maritime Gallery created in 1970s by making a floor under the whale.



Skeleton of whale and much else as well. Photo taken after 1886.



Skeleton of whale and much else as well. Photo taken after 1886.





Leopard. Photo taken in Otago Museum store 2012



Lettering on base reads:

Signor Chiarini
Sumatra

Leopard or Panther
Felis leopardis

1885



The lion tamer with his troupe of
Performing Royal Bengal Tigers
and a couple of leopards too!

| | | | | | | | | | |
|------|---|---|---|-------------|-----|----|----|----|---|
| 1886 | 4 | . | . | A. Palmer | . | 81 | 2 | 17 | . |
| Jan. | 4 | . | 1 | Burator | 134 | 8 | 6 | 8 | . |
| | | . | | Staff | . | 38 | 15 | . | . |
| | | . | | E. Croxford | . | 3 | 3 | . | . |
| Feb | 1 | . | . | Burator | 135 | 8 | 6 | 8 | . |
| | | . | | Staff | . | 38 | 15 | . | . |
| | | . | | Burgoyne | 136 | 68 | 14 | . | . |
| | | . | | Amendino | 137 | 2 | 2 | 6 | . |
| | | . | | A. Chiarini | . | 1 | 15 | . | . |
| | | . | | Smith | . | 1 | 5 | 3 | . |
| | | . | | Milkinson | . | 1 | 12 | 4 | . |
| | | . | | B. Bayly | . | 9 | 13 | . | . |
| 2 | . | . | | . | . | 5 | . | . | . |
| | | . | | Burard | 751 | 6 | . | . | . |

University Otago Ledger Books: Museum Maintenance Account Hocken Collections

Left February 1886
Below March 1887

Payments to
Signor Chiarini

| | | | | | | | | | |
|-------|----|---|---|-------------|----|----|----|----|----|
| 2 | . | . | | H. Halsman | . | 0 | 1 | 15 | . |
| March | 14 | . | . | Burator | . | 0 | 25 | . | . |
| | | . | . | Staff | . | 0 | 23 | 12 | 6 |
| | 26 | . | . | Harman | 15 | 10 | 13 | . | . |
| | | . | . | Wolchke | . | 0 | 6 | 5 | . |
| | | . | . | C. Kells | . | 0 | 1 | . | 10 |
| | | . | . | A. Chiarini | . | 0 | 6 | 10 | . |
| | | . | . | Wise | 12 | 3 | 6 | . | . |
| | | . | . | B. Bayly | . | 4 | 3 | . | . |
| | | . | . | J. Milne | . | 0 | 17 | 6 | . |
| | | . | . | J. Wilson | . | 0 | 18 | 2 | . |
| March | 31 | . | . | Burator | 15 | . | . | . | . |



Animal Attic Otago Museum – inspired by the original galleries



| No. | Date. | Name. | Locality. | Remarks. |
|------|--------|-----------------------------------|---------------------------|--|
| 1. | 1893 | | | |
| B. 1 | May 12 | <i>Elephas indicus</i> (Skull) | India | Ex. Mus. Comp. Anat. ^{by exchange} Cambridge p. 1 Mus. S.R. No. 2 |
| 2 | " " | <i>Suberilis</i> & <i>Pagurus</i> | England | " " " " |
| 3 | " " | <i>Hippopotamus</i> , Skull | Africa | Ex. Mus. Oliver's Coll. ^{by exchange} Massachusetts p. 1 Mus. |
| 4 | " " | <i>Potamon</i> <i>neptuni</i> | Pacific Ocean | " " " " |
| 5 | " " | " " (Section) | " " | " " " " |
| 6 | " " | <i>Telegonus</i> | Africa | " " " " Biol. Dept. |
| 7 | " " | <i>Phrynos</i> | " " | " " " " Biol. Dept. |
| 8 | " " | <i>Myzala</i> | " " | " " " " Biol. Dept. |
| 9 | " " | ? <i>sp.</i> | " " | (small damage) " " C. R. |
| 10 | " " | <i>Scelopendra</i> | ? | " " " " Mus. |
| 11 | " " | <i>Cucumaria frondosa</i> | Beyon | " " " " Biol. Dept. ^{S. R. Mus.} |
| 12 | " " | <i>Psolus phantapus</i> | Firth of Clyde (3) 40 fms | " " " " " |
| 13 | " " | <i>Cucumaria hyndensis</i> | " " 7 fms (2) | " " " " " |
| 14 | " " | <i>Thyone fusca</i> | " " 35 fms (2) | " " " " " |

One of a series of museum registers begun in 1893

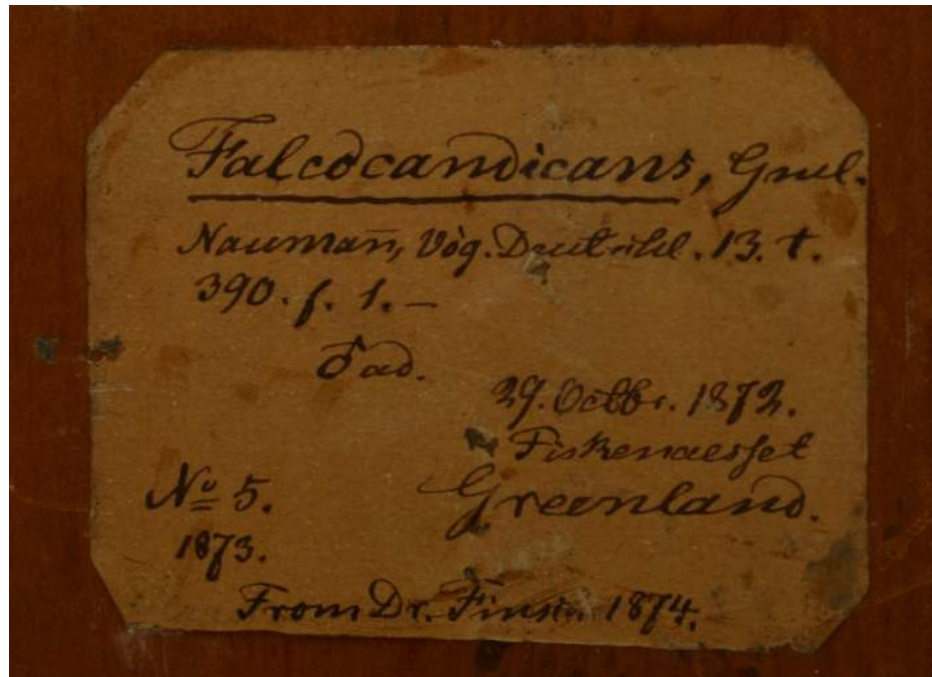


Dr Otto Finsch (1839-1917)



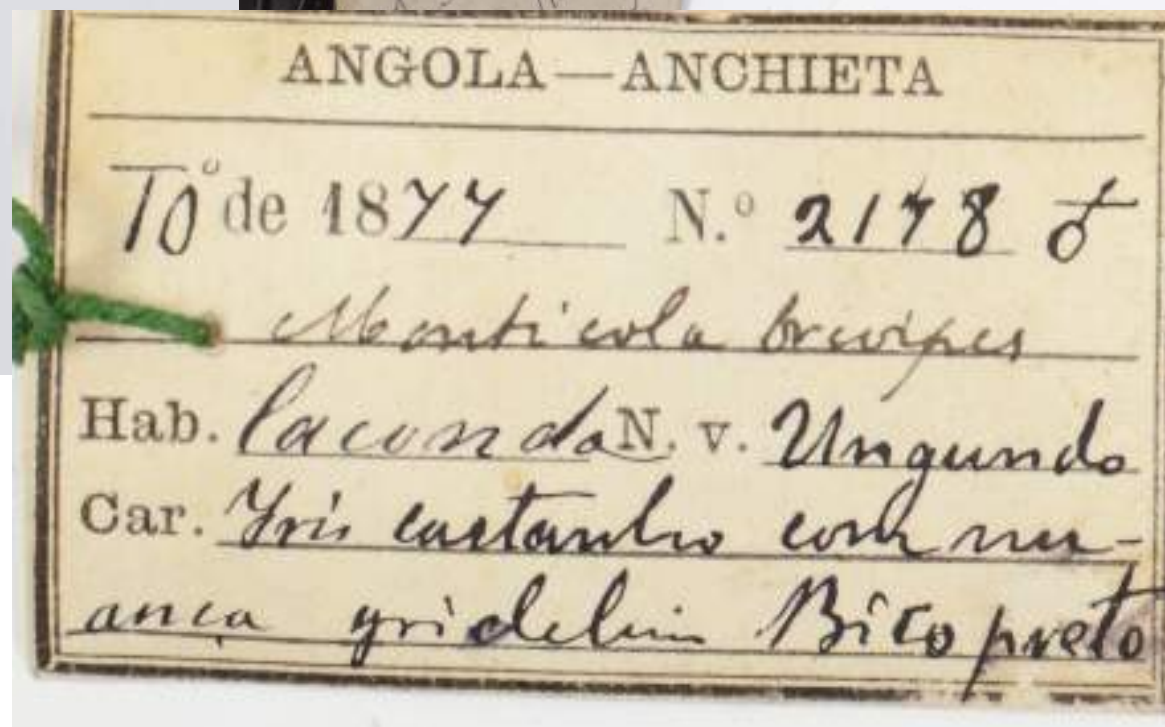
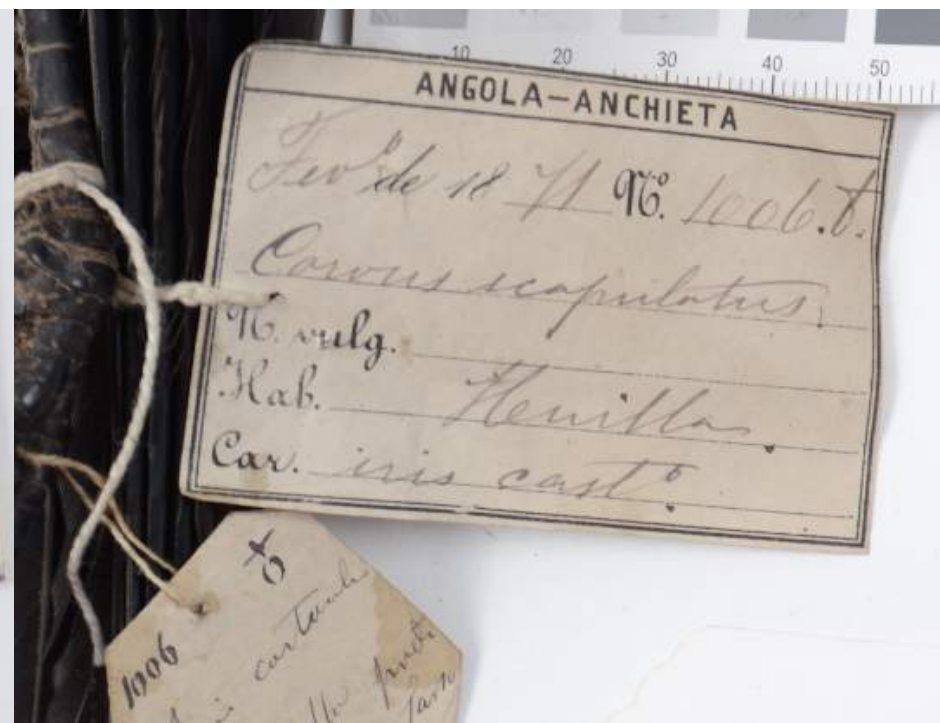
Dr. O. Finsch

AV1547 Gyrfalcon *Falco rusticolus*. Finsch's original specimen listed in the 1878 Guide.

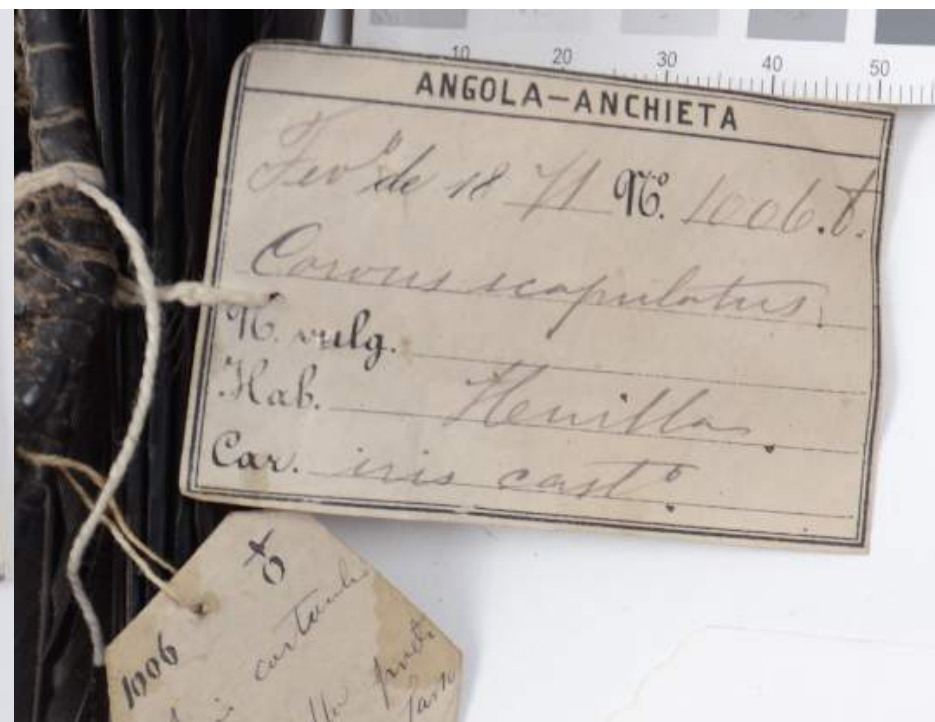


Label on the base reads:
Falco candicans, Gml.,
Naumann, Vög. Deutschl. 13.t
390. f. 1 —
♂ ad.
29. Octbr. 1872.
Fiskenaesset
Greenland. No 5. 1873.
From Dr Finsch 1874

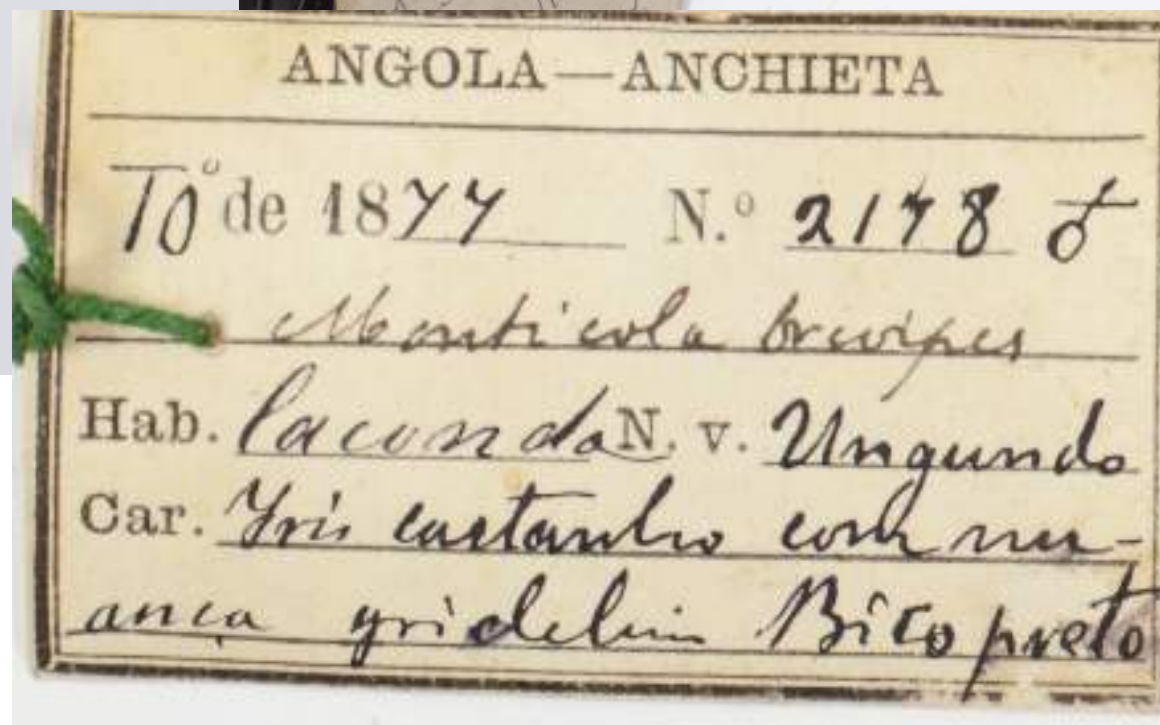




Right: AV2592
Above left: AV2549
Above right: AV2964



Jose d'Anchieta
(1832-1897)



More Questions than Answers

Henry Ogg Forbes (1851-1932)

Explorer in New Guinea 1885

Did he swap specimens with
Jose d'Achieta in Angola?

Curator Canterbury Museum 1890-1893

How did his specimens get to Oamaru?

Forbes specimens acquired by Otago
Museum in 1953, but
were the Angolan ones amongst them?



Thank you for your attention, are
there any questions?