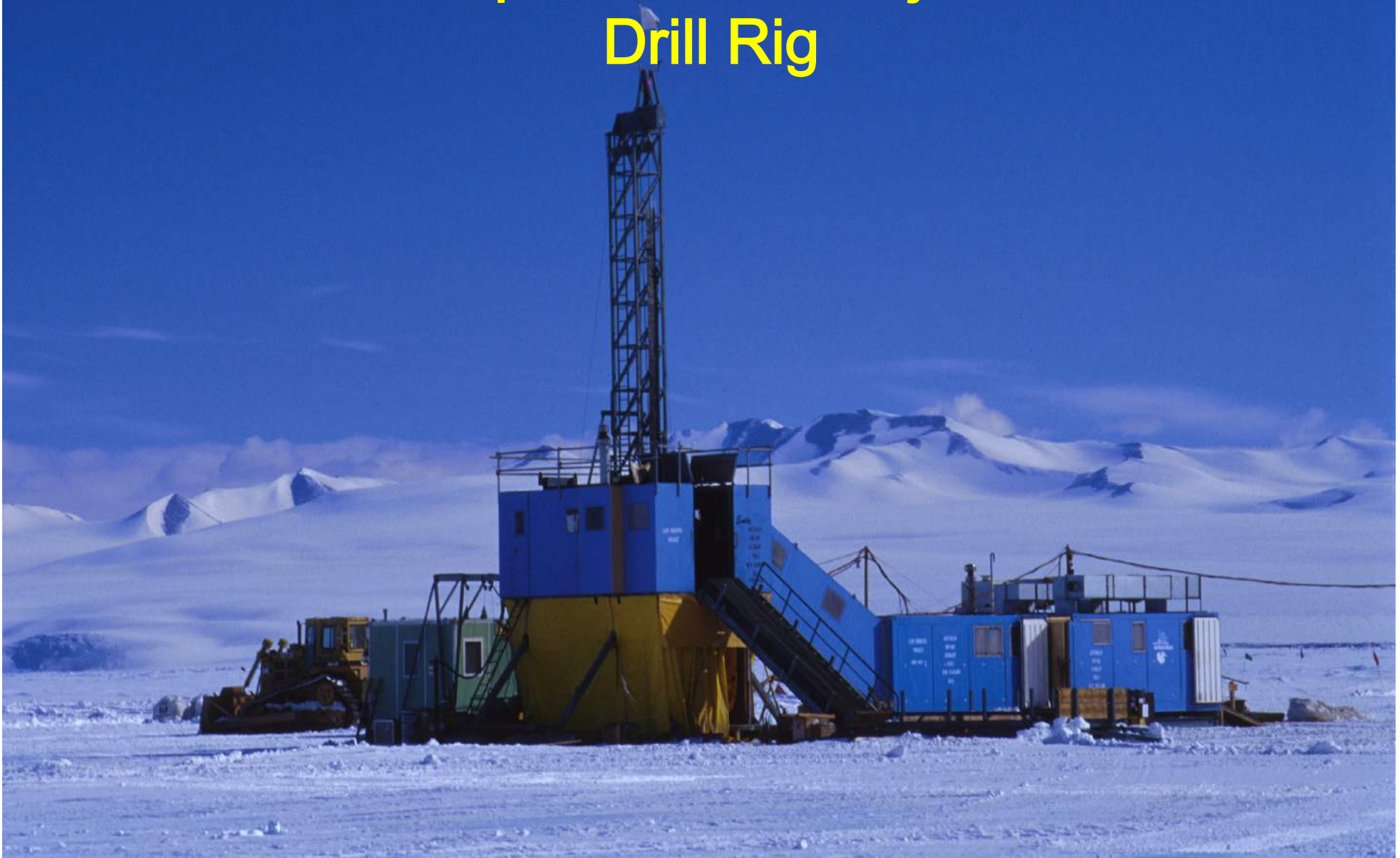


ANDRILL

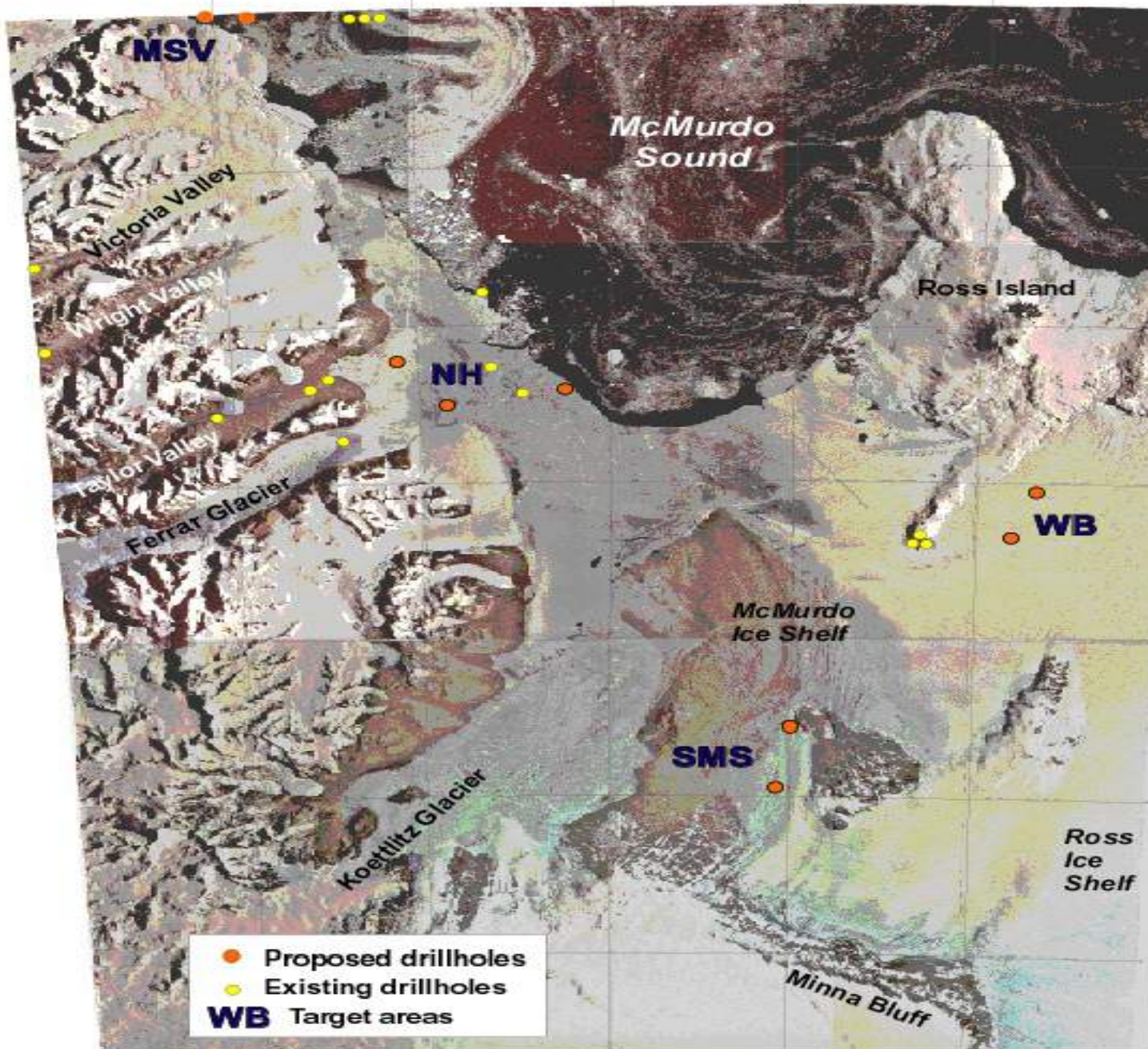
Objective: To recover high quality continuous core
from the Antarctic Continental Shelf

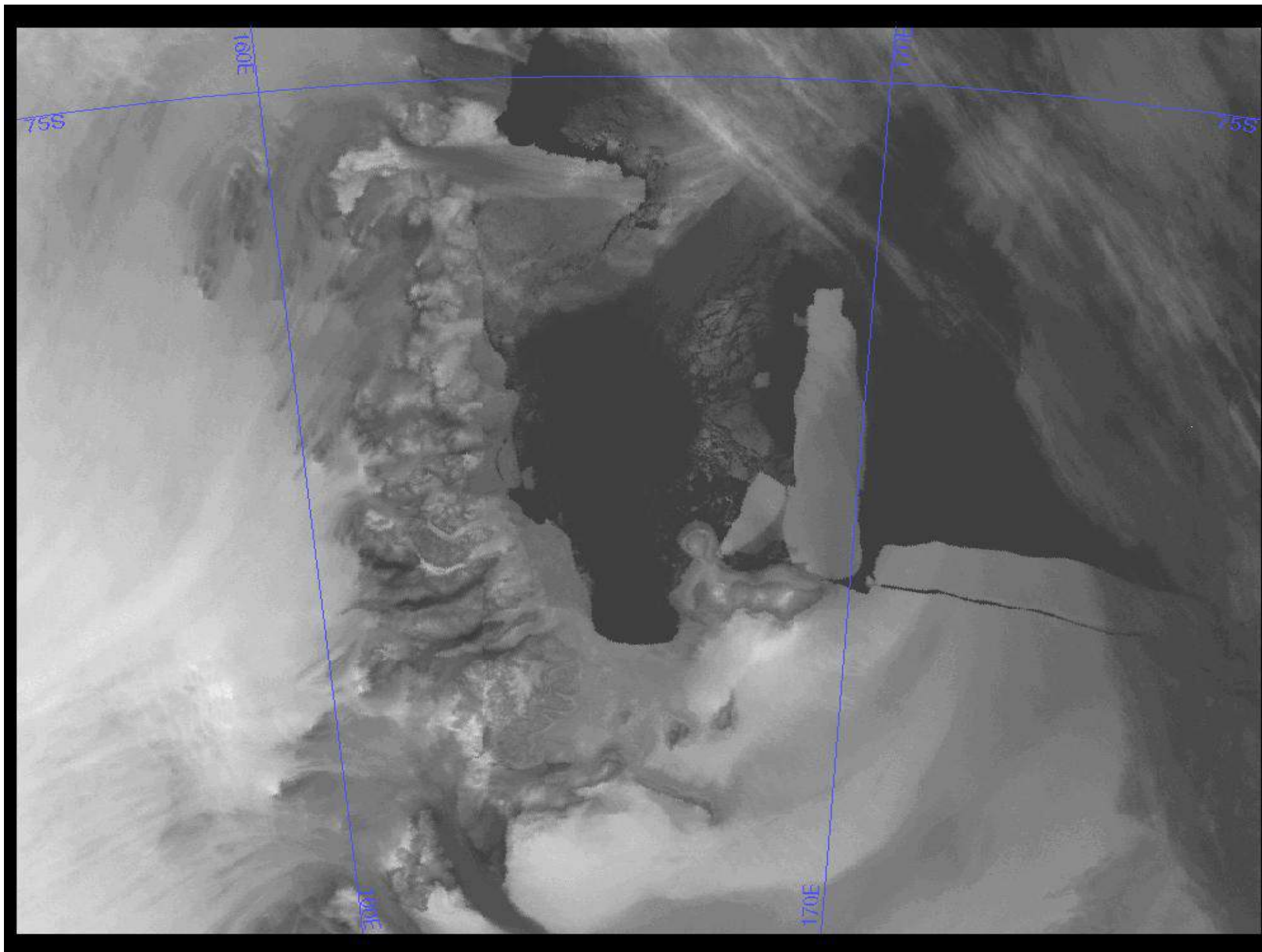


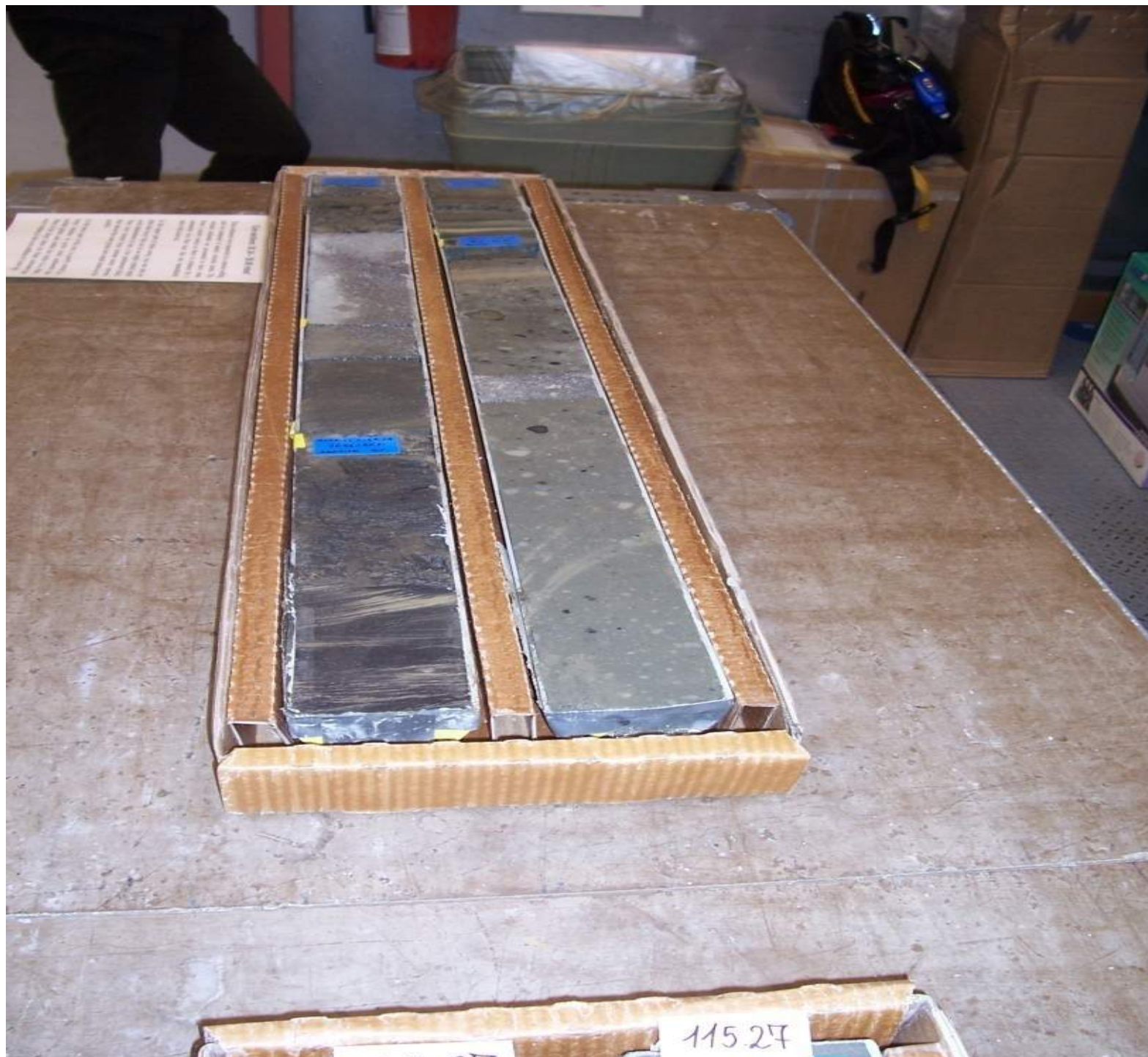
Cape Roberts Project Drill Rig

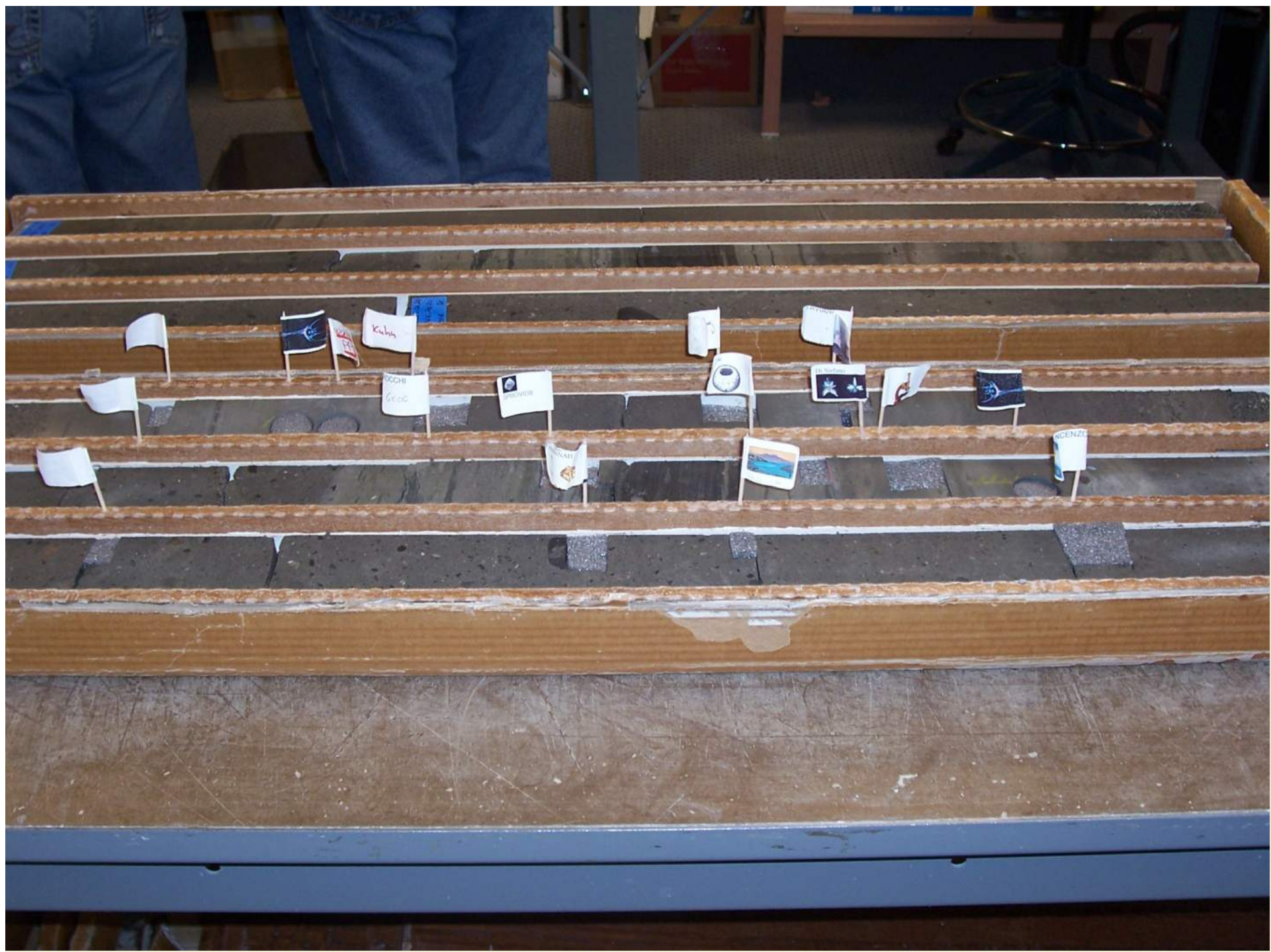


ANDRILL: *McMurdo Sound Portfolio*



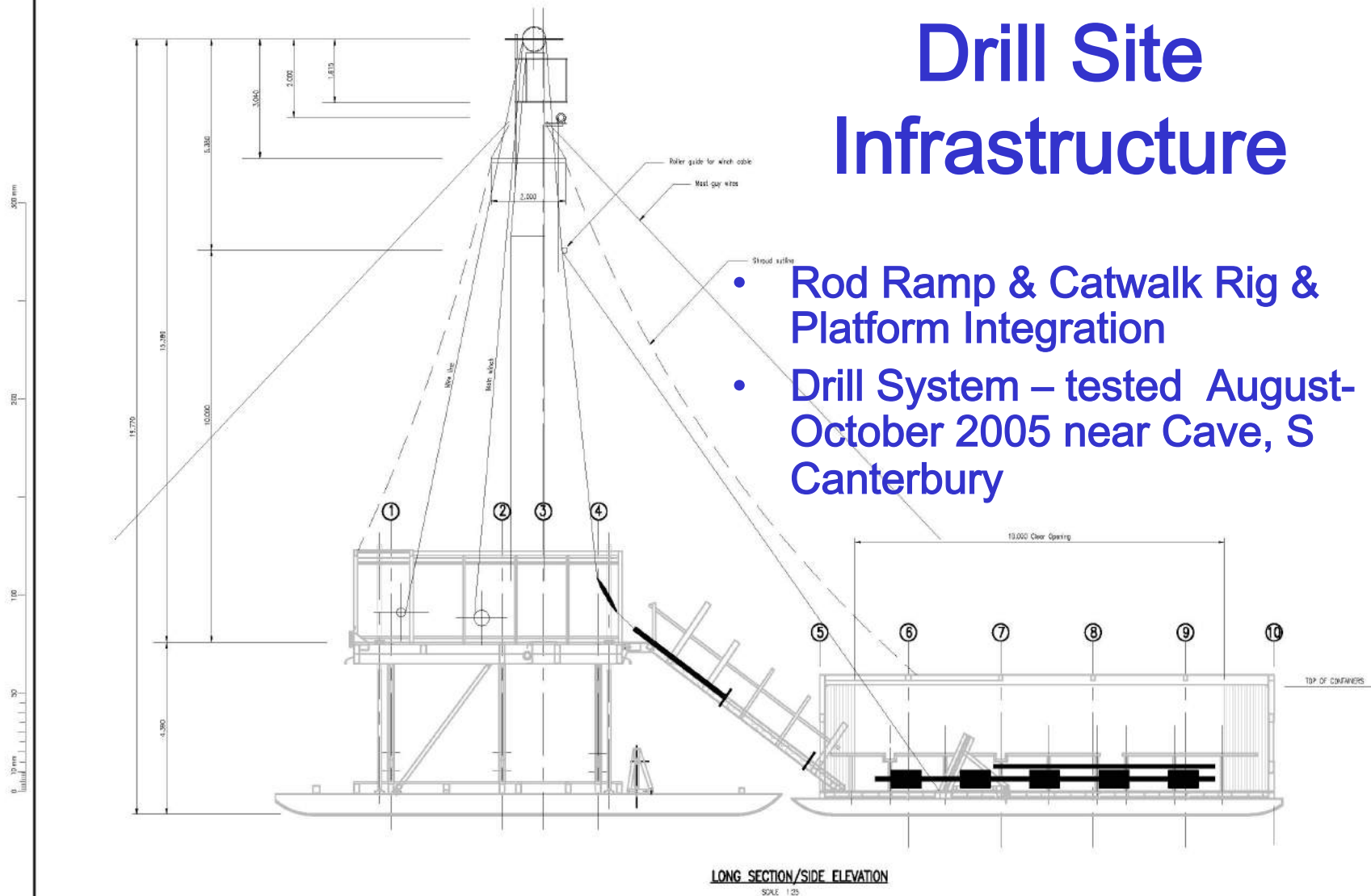






Drill Site Infrastructure

- Rod Ramp & Catwalk Rig & Platform Integration
- Drill System – tested August-October 2005 near Cave, S Canterbury



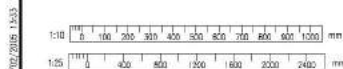
DRAFT COPY

DESIGN	BY	CHECKED	DATE
DESIGN	MEH		2.25
DESIGN	DDY		9.25
APPROVED			

This drawing and its contents are the property of Gaus International Consultants Limited. Any unauthorised employment or reproduction, in full or in part, is forbidden.



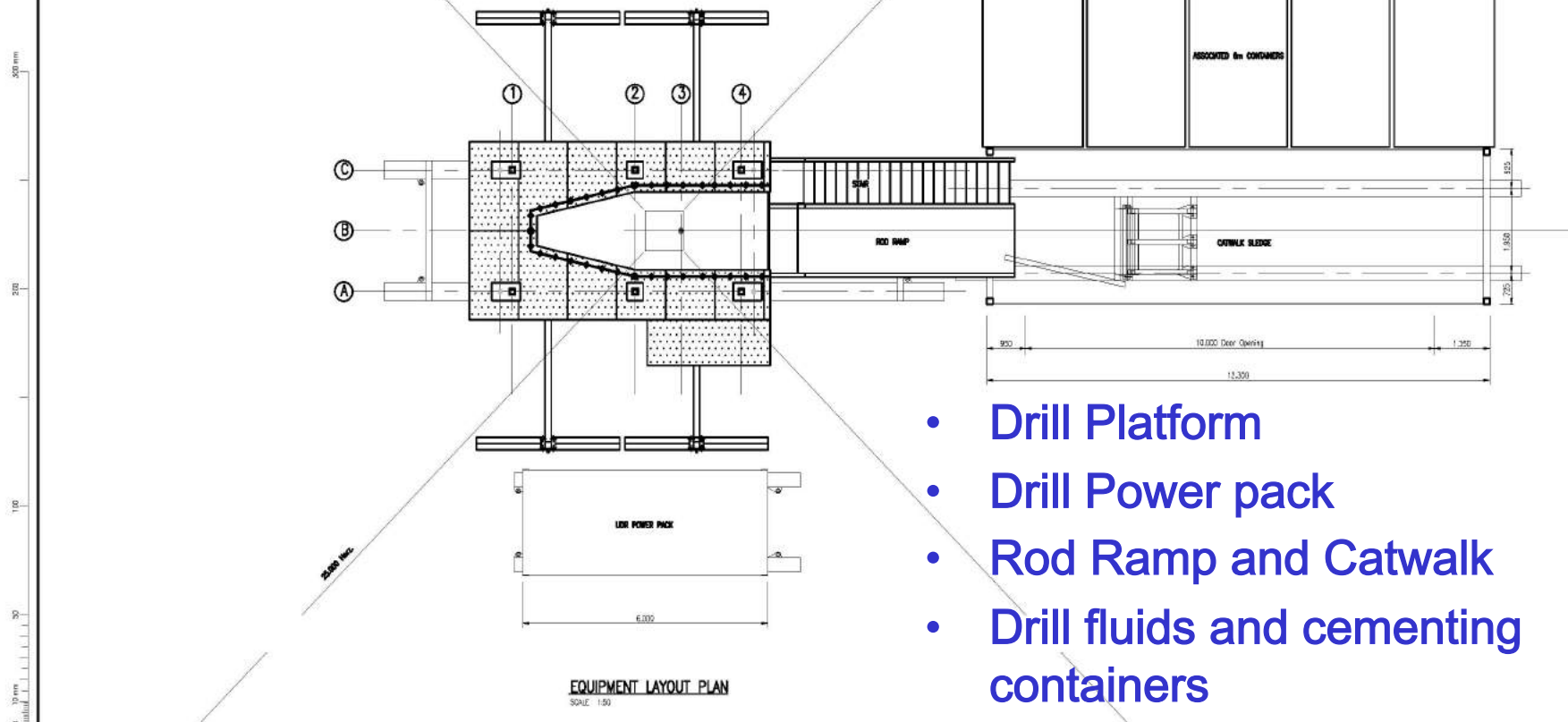
FILE: ANTARCTICA NEW ZEALAND ANDRILL PROJECT DRILL PLATFORM, ROD RAMP & CATWALK SLEDGE			
LONG SECTION/SIDE ELEVATION			
STATUS: TENDER ONLY	FILE: DW276.00	D655C	
SCALE: 1:100 @ A3 1:50 @ A1	PLAT DATE: 4.2.05	FEATURE: 6/2203/8	CODE: 7602
		SHEET: 301	REVISION:



GRAPHIC SCALES

g:\antarctica\6 andrill\andril\proj\drawings\working\rod ramp & catwalk sledge\6-2203-6-5802-120-145.dwg GPC044 SHEET 302 AT (8/4/05/04)

Drill Site Infrastructure (Sledge mounted)

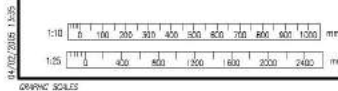


- Drill Platform
- Drill Power pack
- Rod Ramp and Catwalk
- Drill fluids and cementing containers
- Generators container
- Hot Water Drill

DRAFT COPY		DESIGN	MRN	CHECKED	2.25
		DRAWN	DDY		2.25
APPROVED					
This drawing and its contents are the property of Goss International Consultants Limited. Any unauthorised employment or reproduction, in full or in part, is forbidden.					
AUTOMATIC		APP'D	DATE		

Antarctica New Zealand		Christchurch Civil Engineering	
PO Box 1487 Christchurch, New Zealand Tel: +64 3 363 5400 Fax: +64 3 363 7008			

FILE: ANTARCTICA NEW ZEALAND ANDRILL PROJECT DRILL PLATFORM, ROD RAMP & CATWALK SLEDGE LAYOUT PLANS			
STATUS	SCHEME	FILE	DN276.00 D655C
SCALE: 1:100 @ A3 1:50 @ A1	PLAT DATE 4.2.05	FEATURE REVISION 6/2203/8	CODE 7602
SHEET 300		REVISION	



Drill Platform

- Sledge mounted



Drill Platform

- Jack-up (tidal movement of platform)
- Enclosed Drill floor, mast and cellar
- Sea Riser Tidal Compensation inbuilt into platform structure.

UDR 1200 –16 Drill Rig

- A wire line coring rig capable of also deploying a “heavy sea riser”.
- Customisation of an existing model for sea riser and Antarctic operations.



UDR 1200-16

- Winch capacity increased to ~28 tonnes (double block) for sea riser
- Winch drill floor mounted (warm environment)





















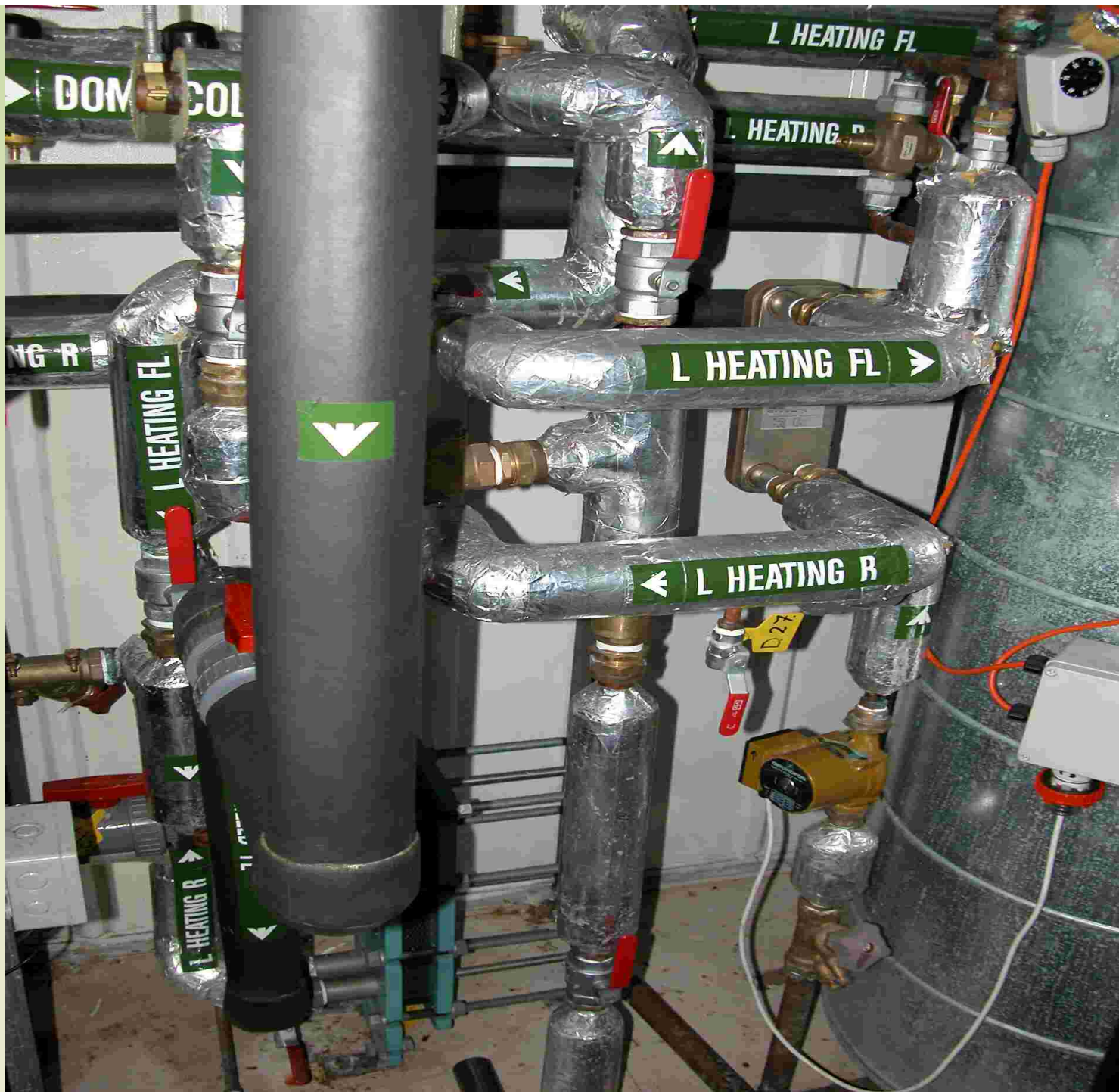






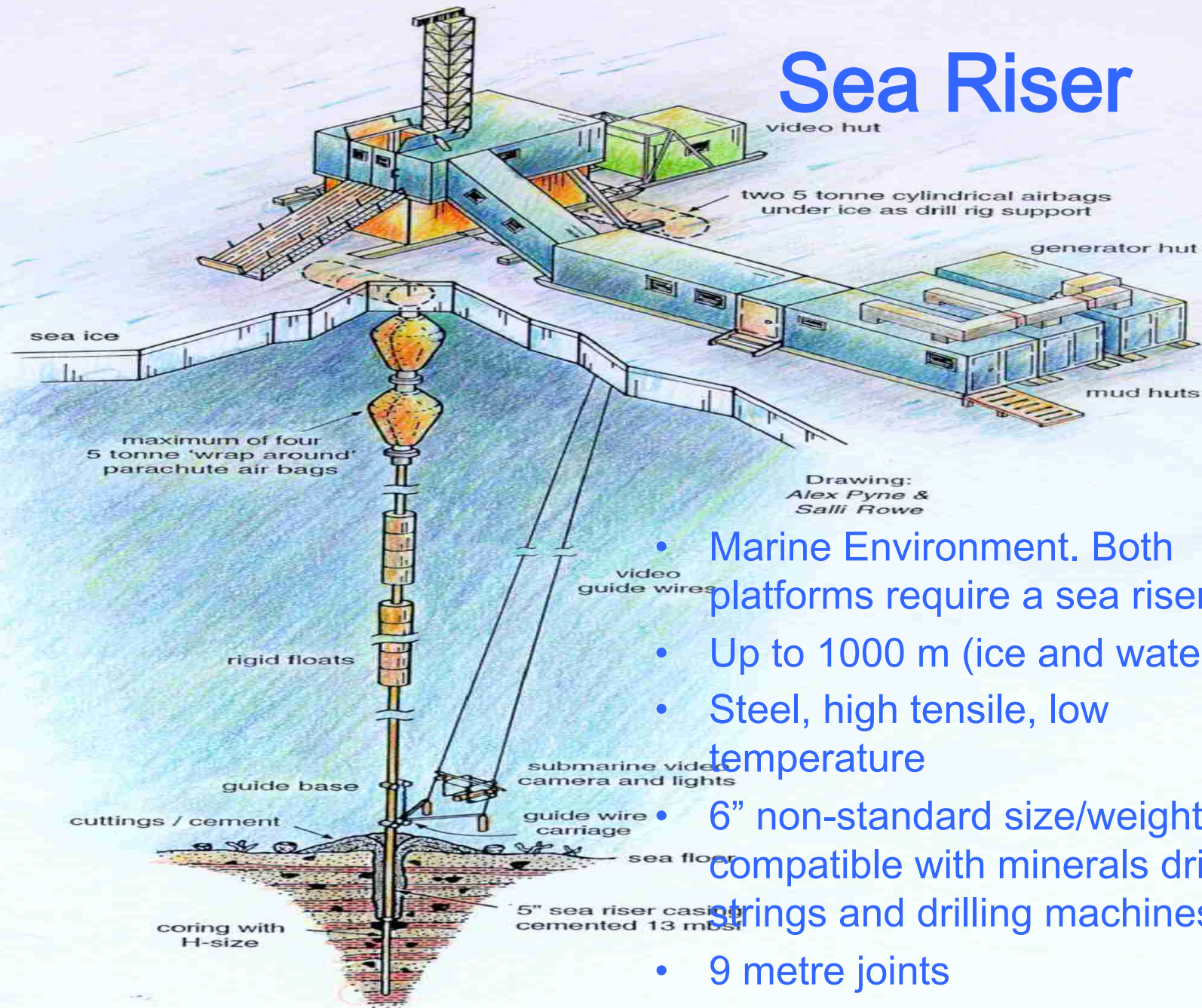








Sea Riser

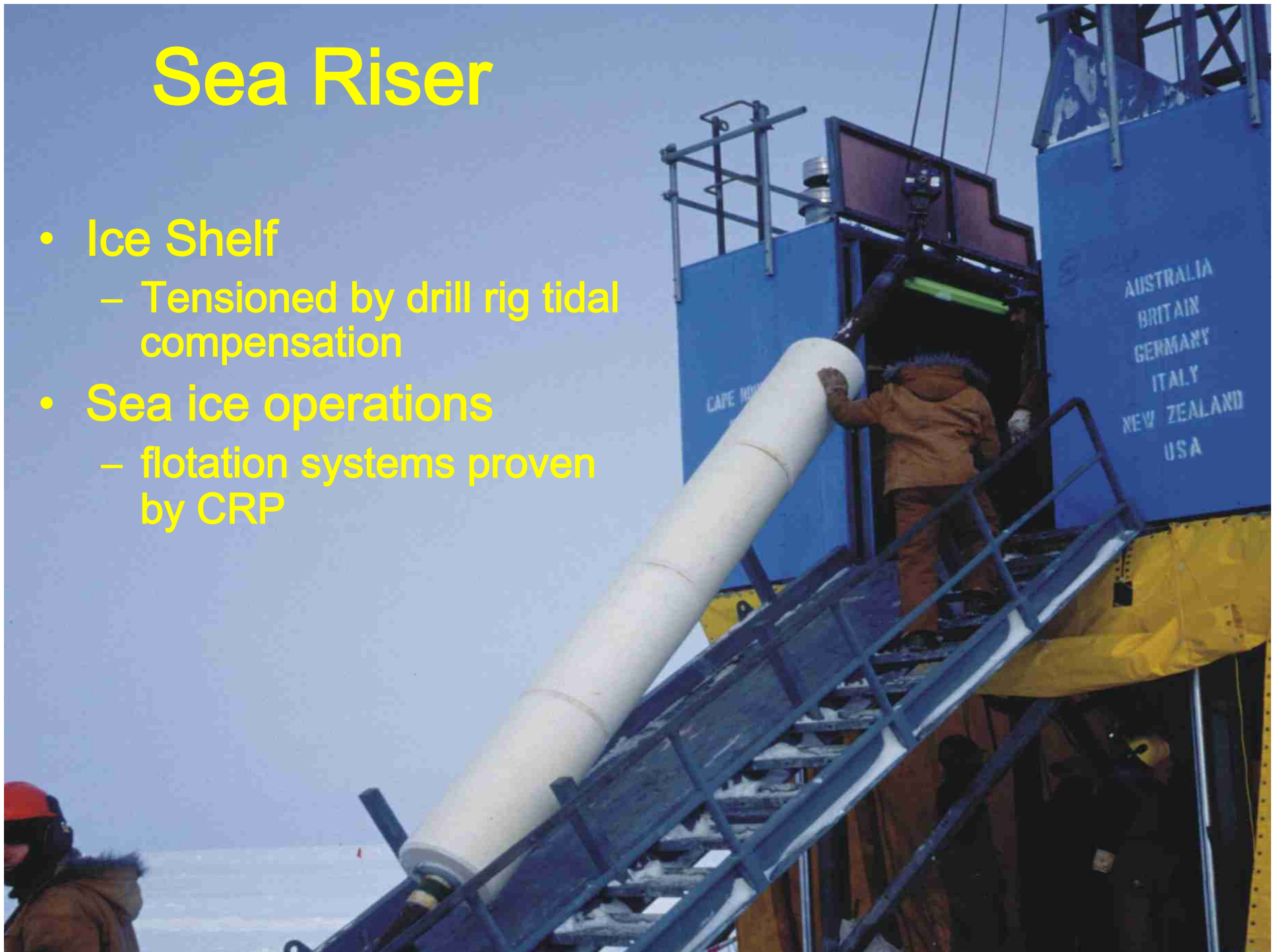


- Marine Environment. Both platforms require a sea riser.
- Up to 1000 m (ice and water)
- Steel, high tensile, low temperature
- 6" non-standard size/weight to be compatible with minerals drill strings and drilling machines.
- 9 metre joints



Sea Riser

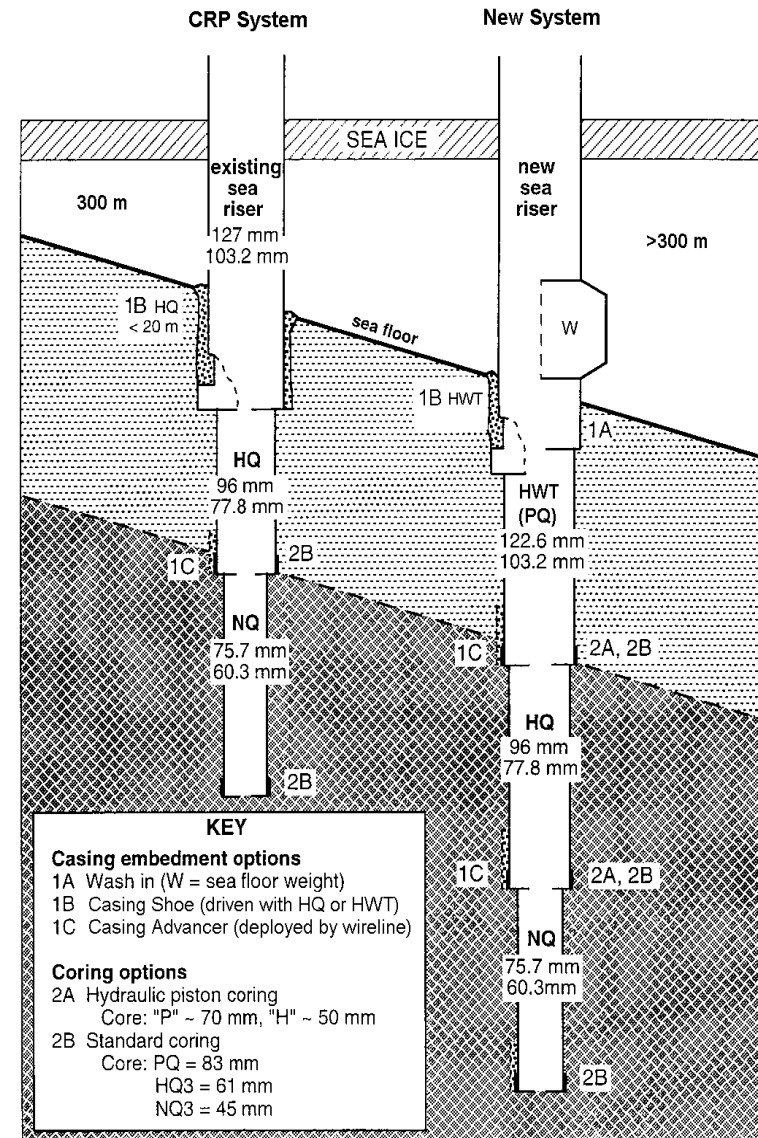
- Ice Shelf
 - Tensioned by drill rig tidal compensation
- Sea ice operations
 - flotation systems proven by CRP

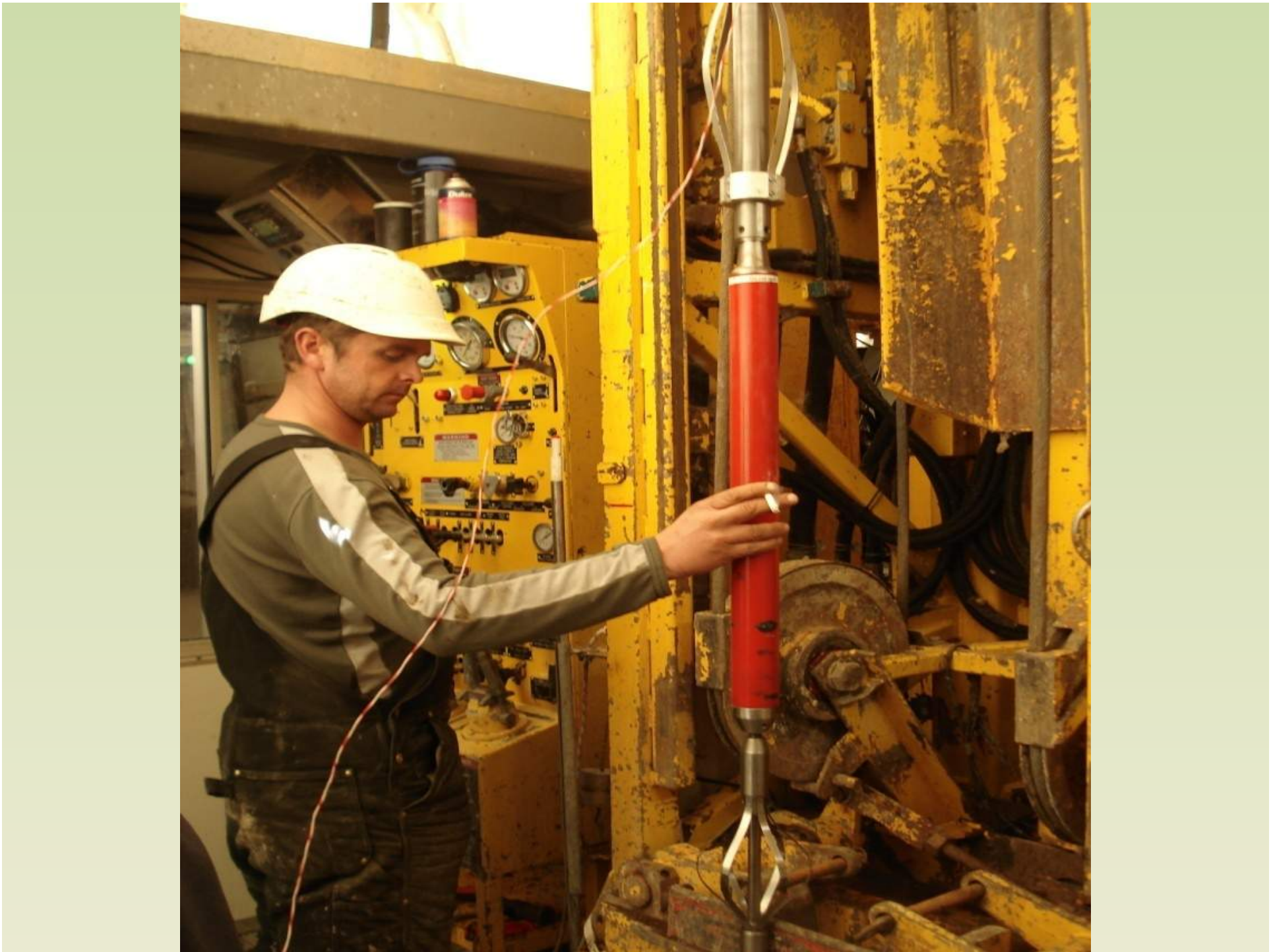


Design Capability

- Three coring drill strings: P, H & N (soft sediment sampling: P & H)
- 2000 m coring string (N drill rod)
- 1000 m sea riser
- Drill 1000 m “into the sea floor”

ANDRILL Sea riser / drill string systems











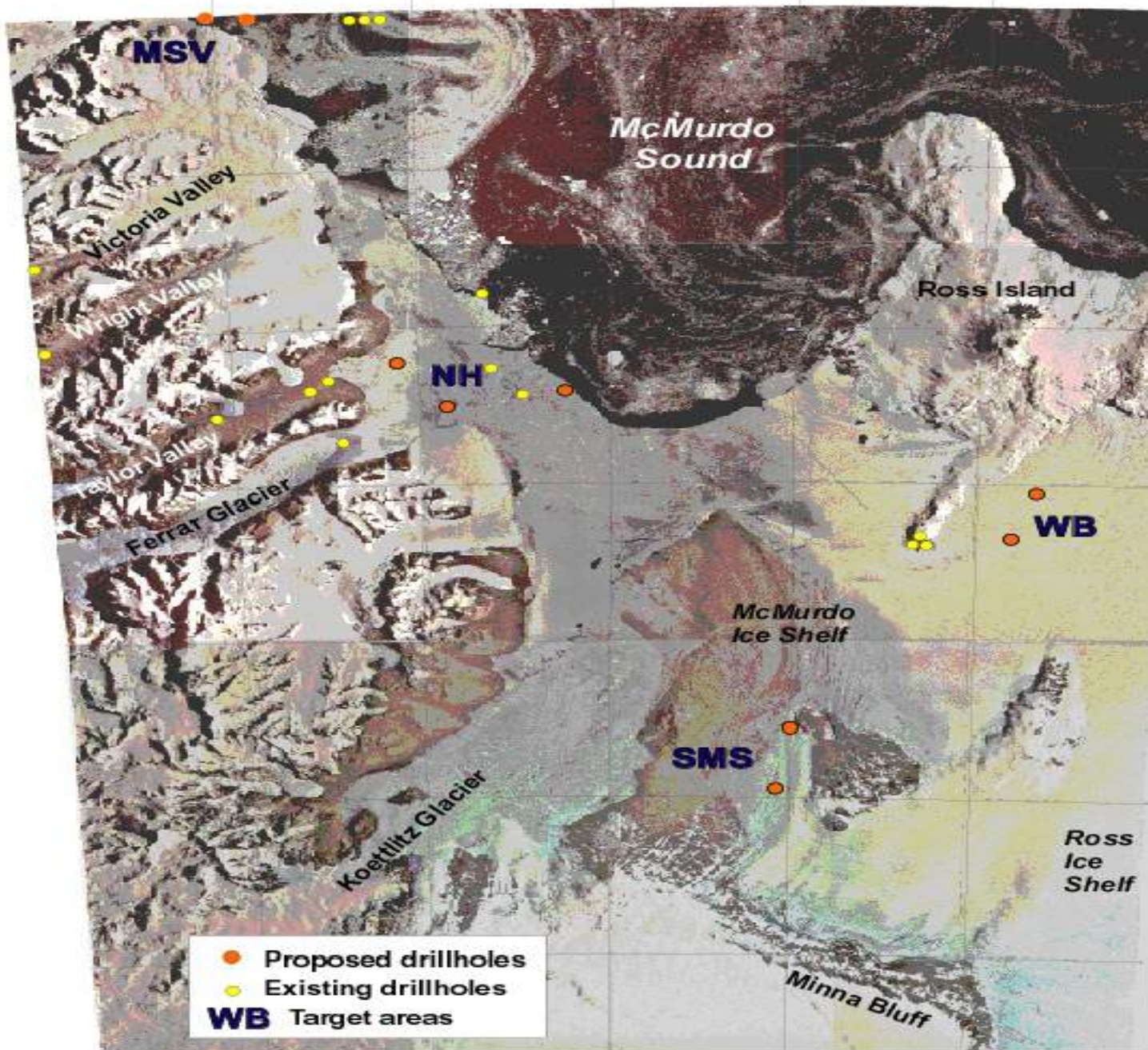








ANDRILL: *McMurdo Sound Portfolio*

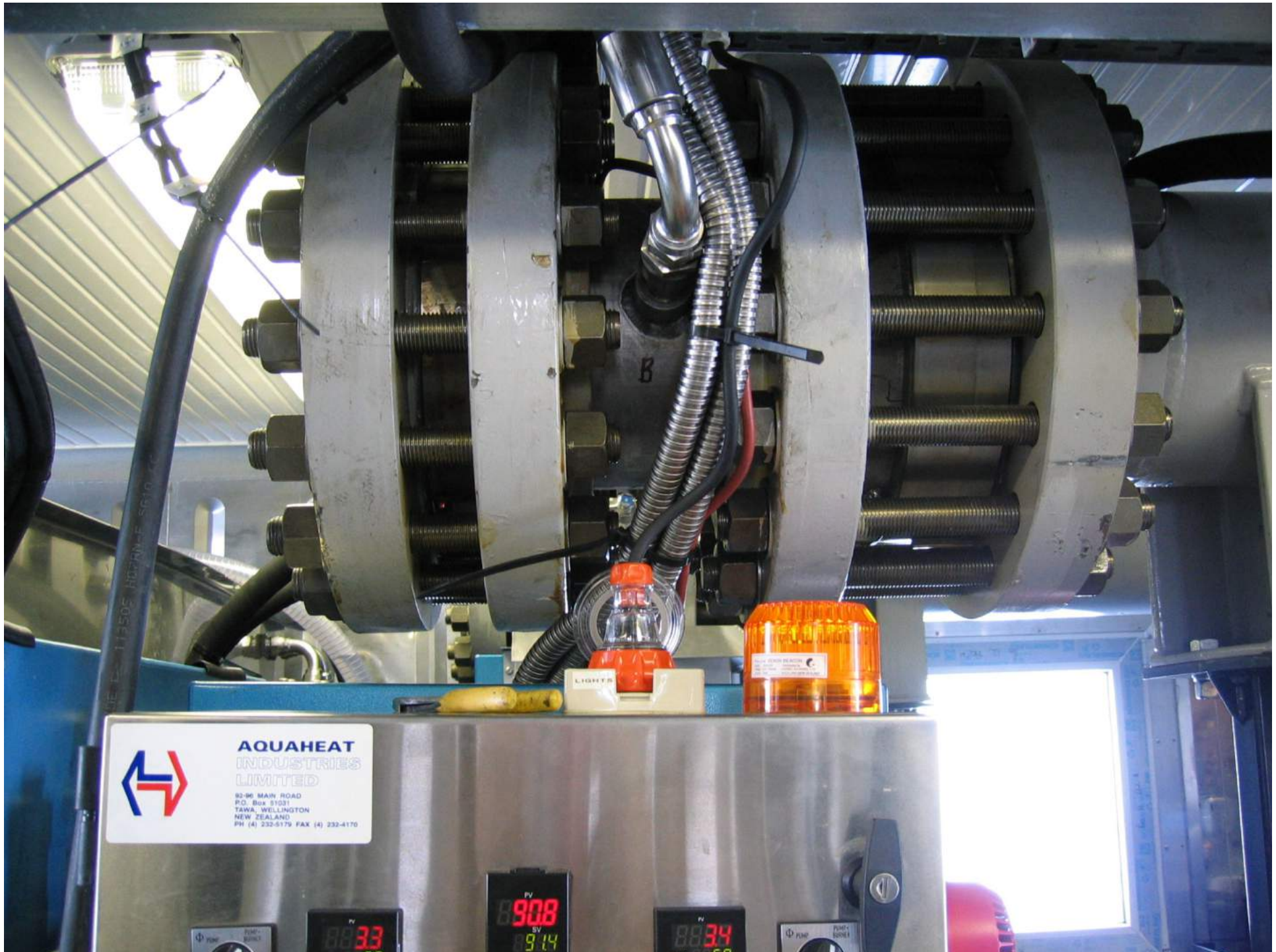












**AQUAHEAT
INDUSTRIES
LIMITED**

92-96 MAIN ROAD
P.O. Box 51031
TAWA, WELLINGTON
NEW ZEALAND
PH (4) 232-5179 FAX (4) 232-4170

88.33
PV
89.14

89.08
PV
89.14

88.34
PV
89.14

Φ PUMP
PUMP-
STOPPER









21/08/2007

