



Craigieburn

Conservation and Heritage Legacies
of Subsistence Farming in Dunedin

Paul Pope
Dunedin Amenities Society



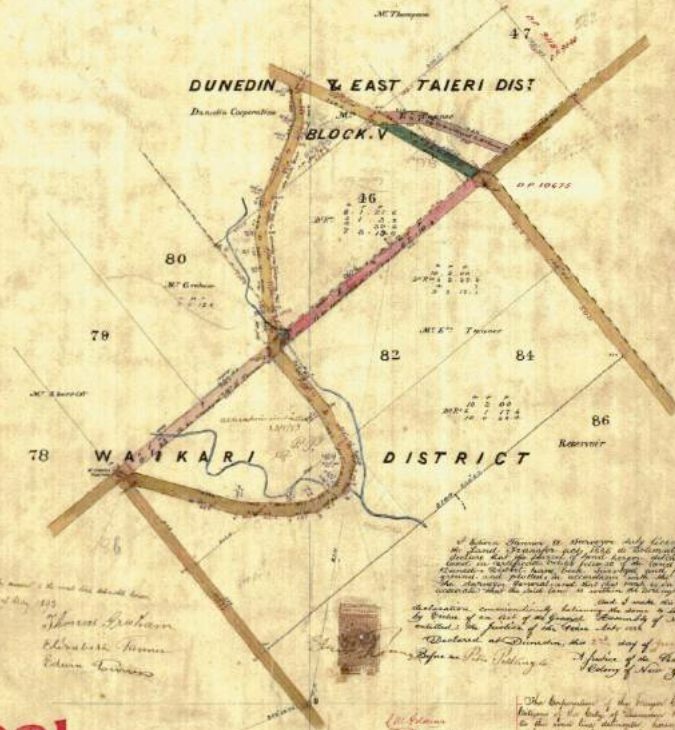
1601

Received for Deposit
the 20th October 1876.
Public
Deputy Land Officer



Plan of
ROADS THROUGH SEC: 80, 82 & 84 WAIKARI DIST
AND ROAD DEVIATION THROUGH PART OF SEC: 46 & 47
DUNEDIN & EAST TAIERI DISTRICT
BLOCK V

SCALE 2 CHAINS TO AN INCH
SURVEYED BY E. TANNER
JUNE 1860

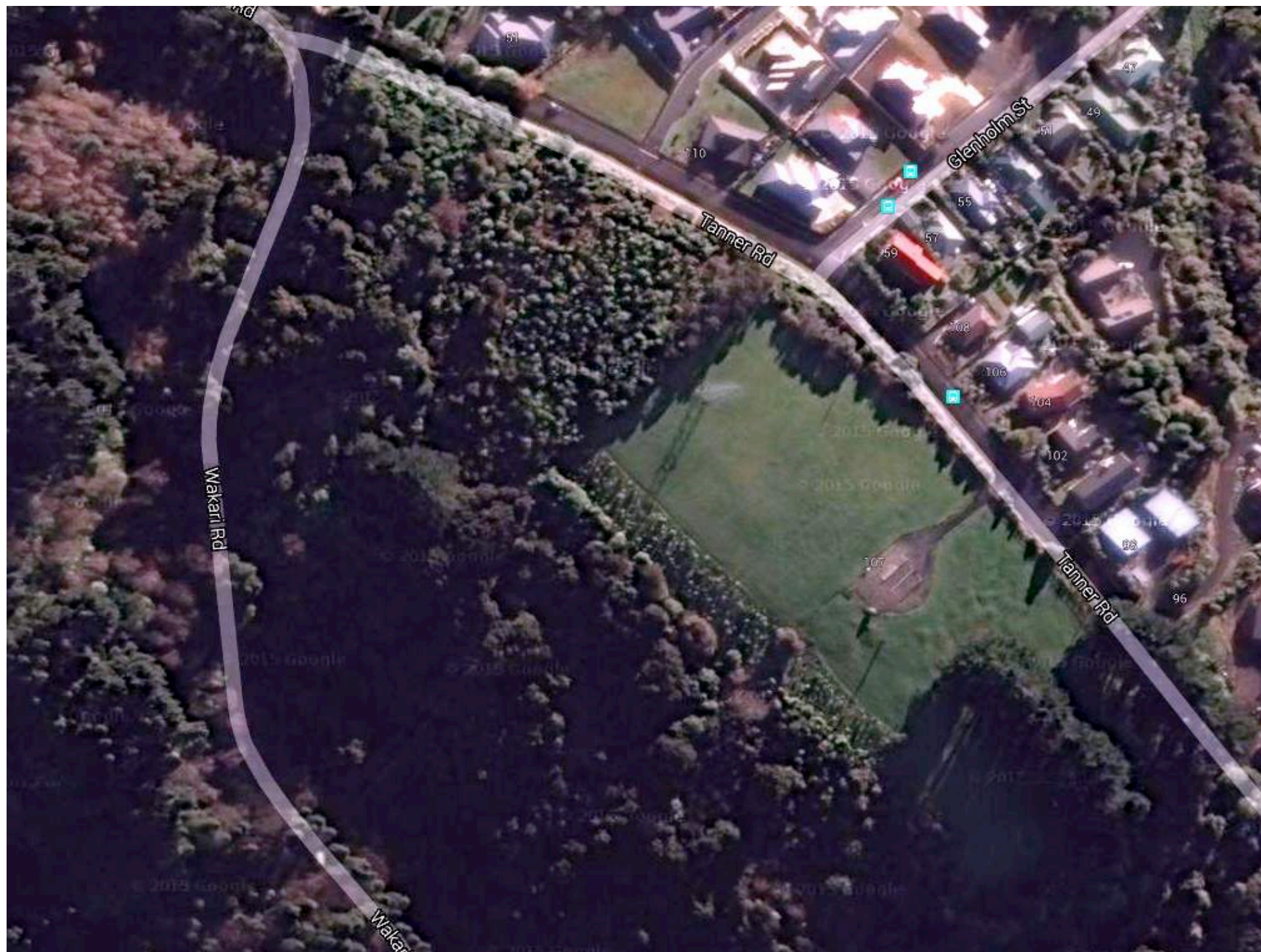


1091



- Robert & Elizabeth Rankin arrived from Scotland on the Robert Henderson with their daughter Betsy in 1860 as “assisted immigrants.”
- They purchased the bush block and began breaking it in living in a 3 walled barn before building their first house.
- Robert died in 1871 and Elizabeth remarried Edwin Tanner in 1879
- Betsy married Robert Sherriff and had 10 children and lived on the property until her death in 1949.

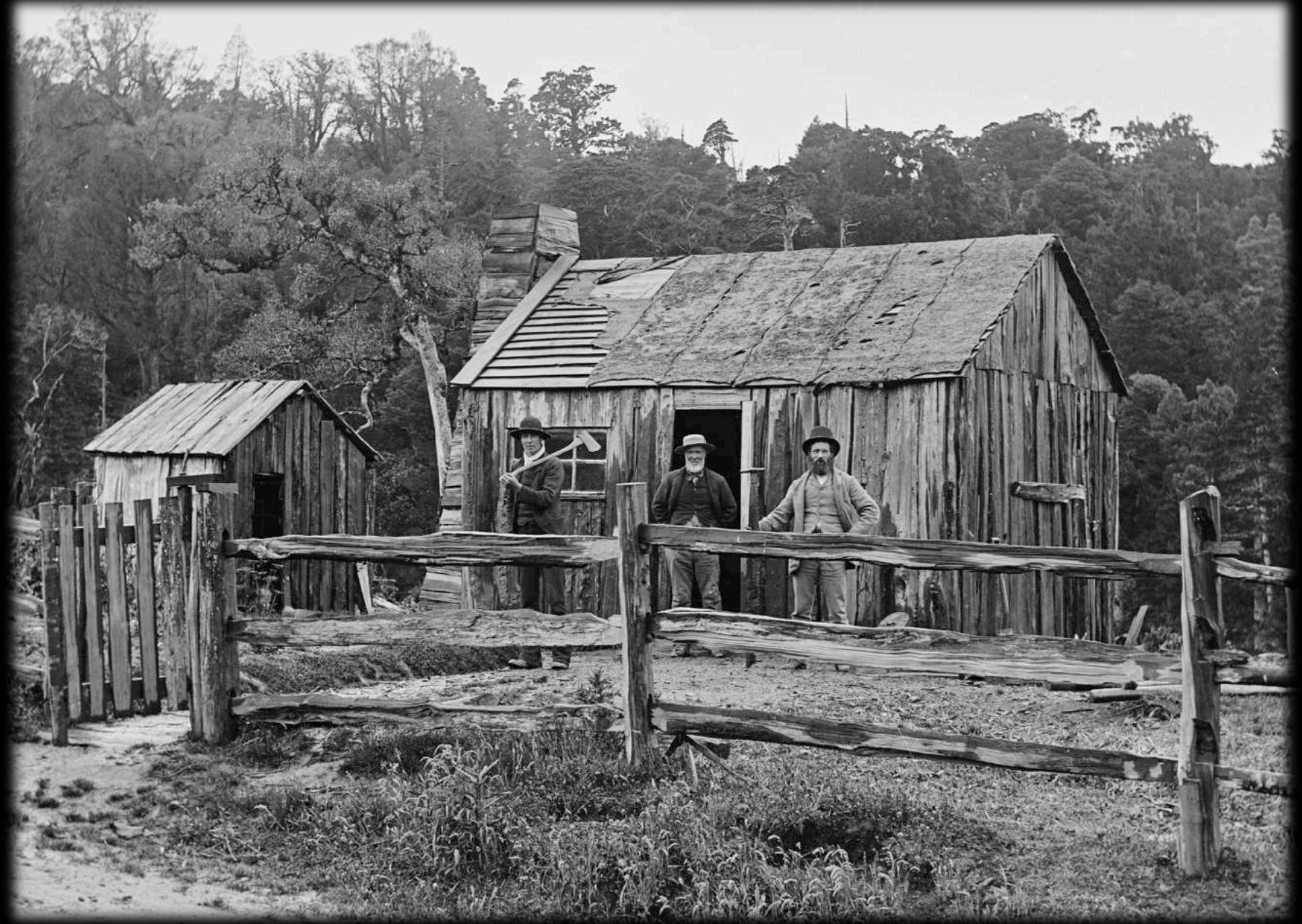






VALLEY, DUNEDIN

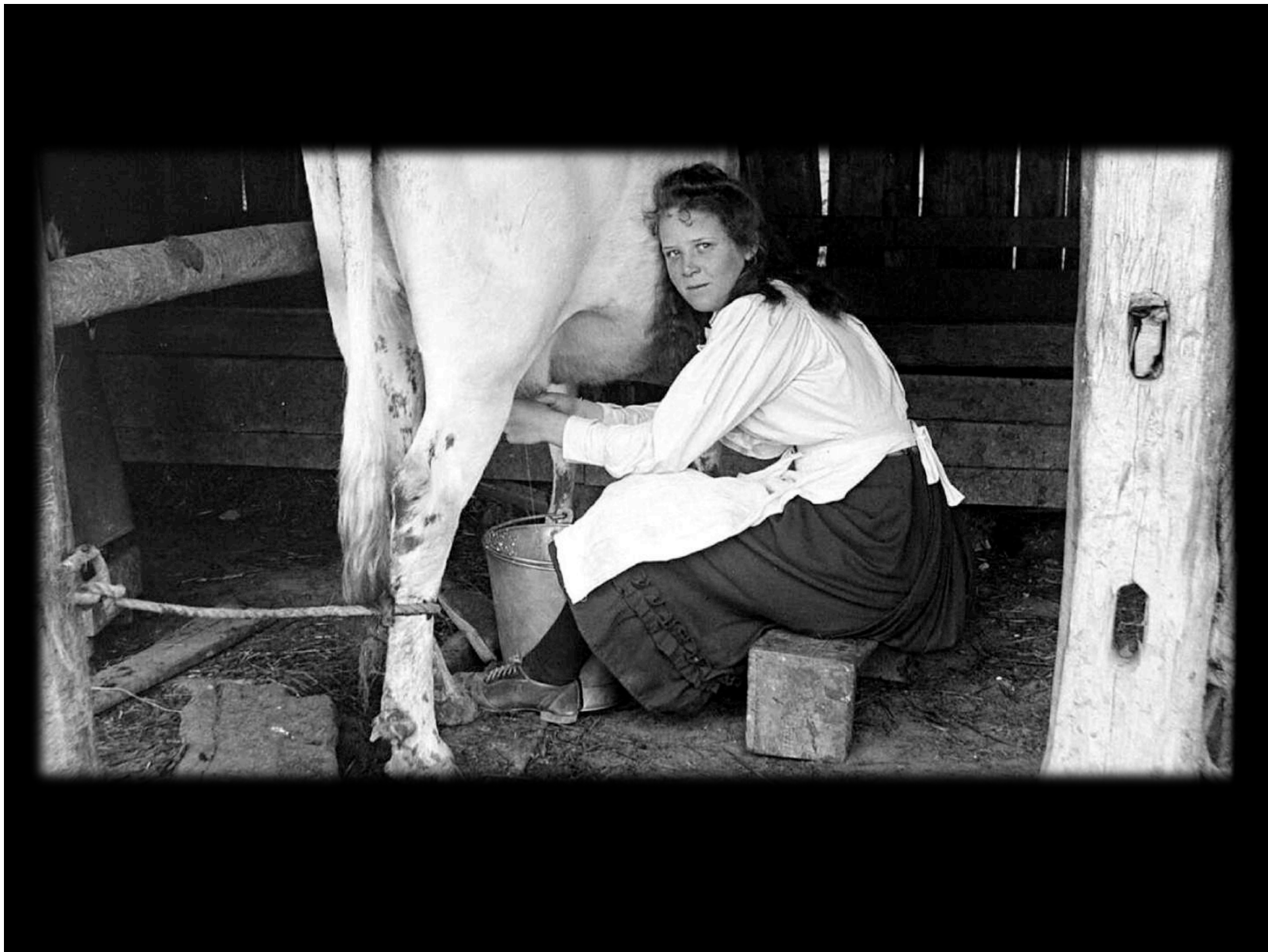




Felling rimu in the Leith Valley



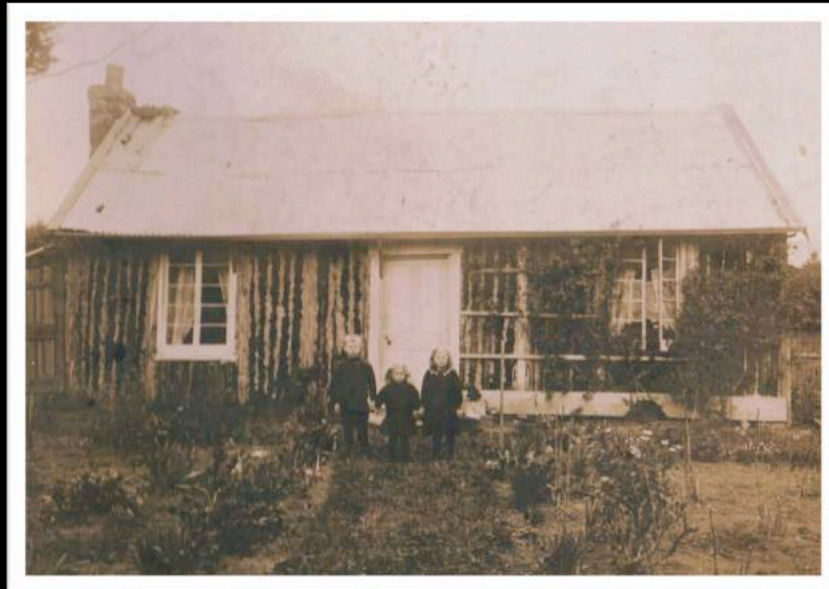
Moving a bullock train Leith Valley





School Creek 1890's
Elderly man making walking sticks

A fern tree house
Wakari Road



Wattle and Daub



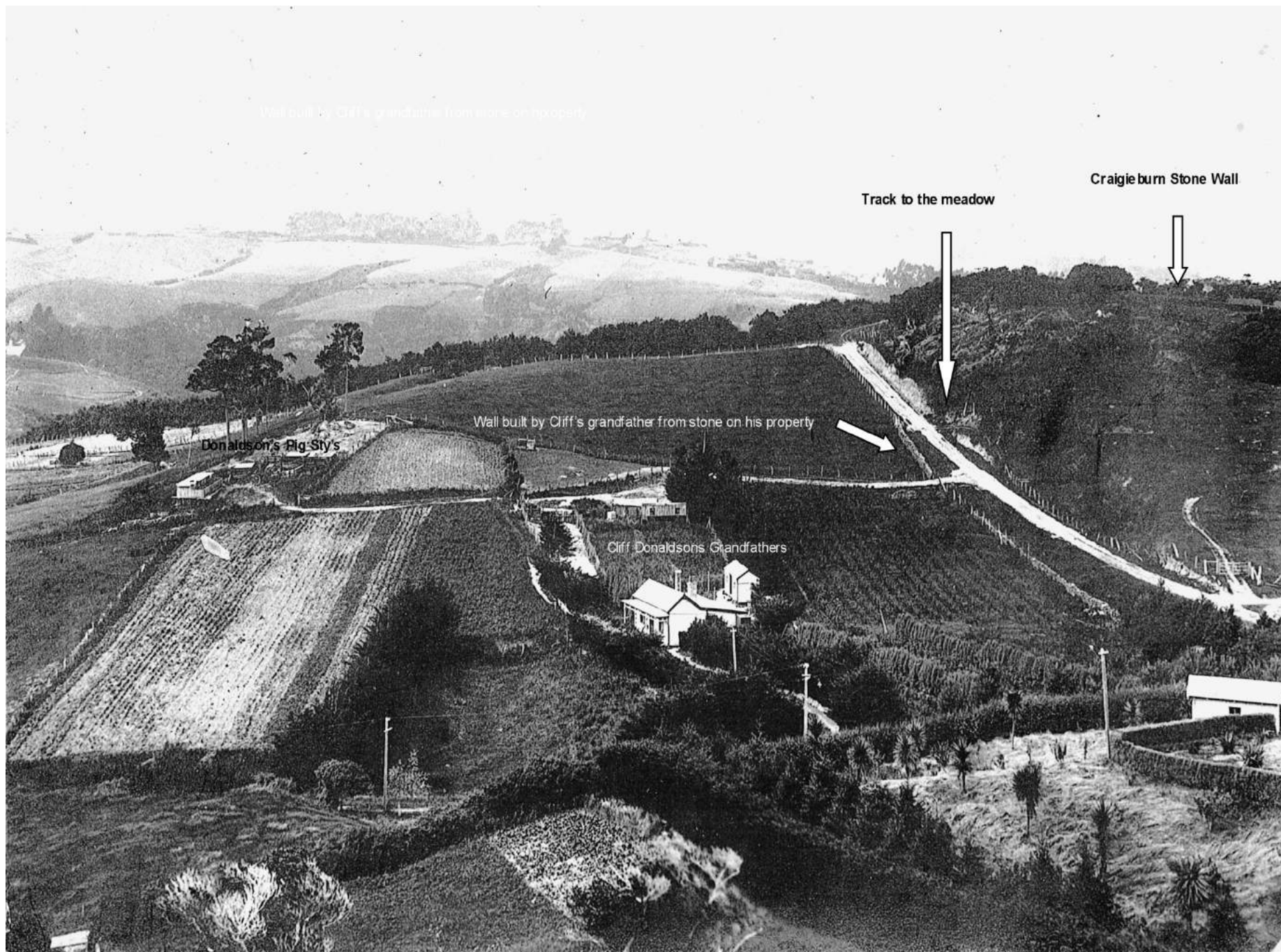




Robert Sherriff at Craigieburn
Circa 1900







Wall built by Cliff's grandfather from stone on his property

Track to the meadow

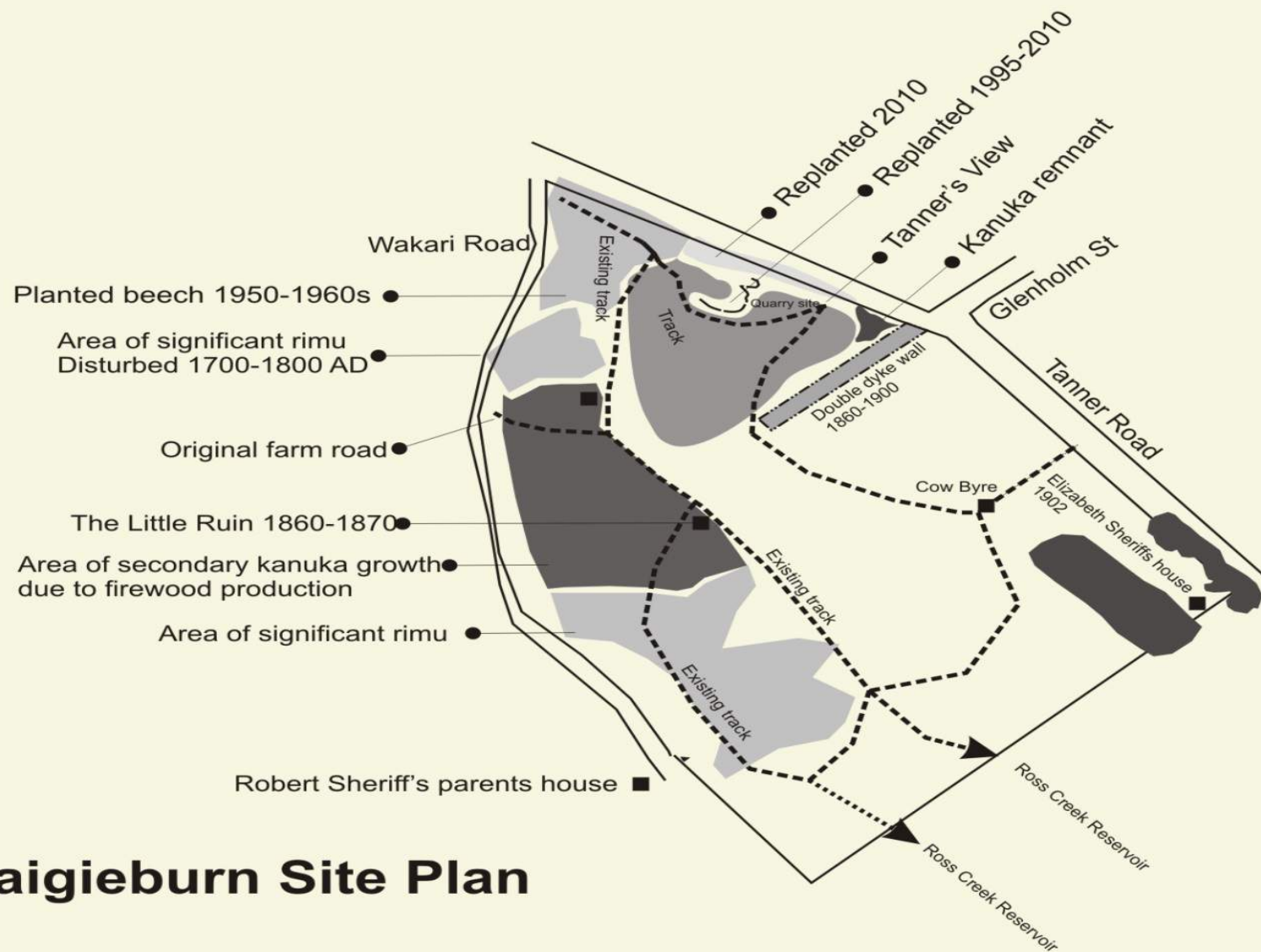
Craigieburn Stone Wall

Donaldson's Pig Sty's

Wall built by Cliff's grandfather from stone on his property

Cliff Donaldson's Grandfather's

Cliff



Craigieburn Site Plan

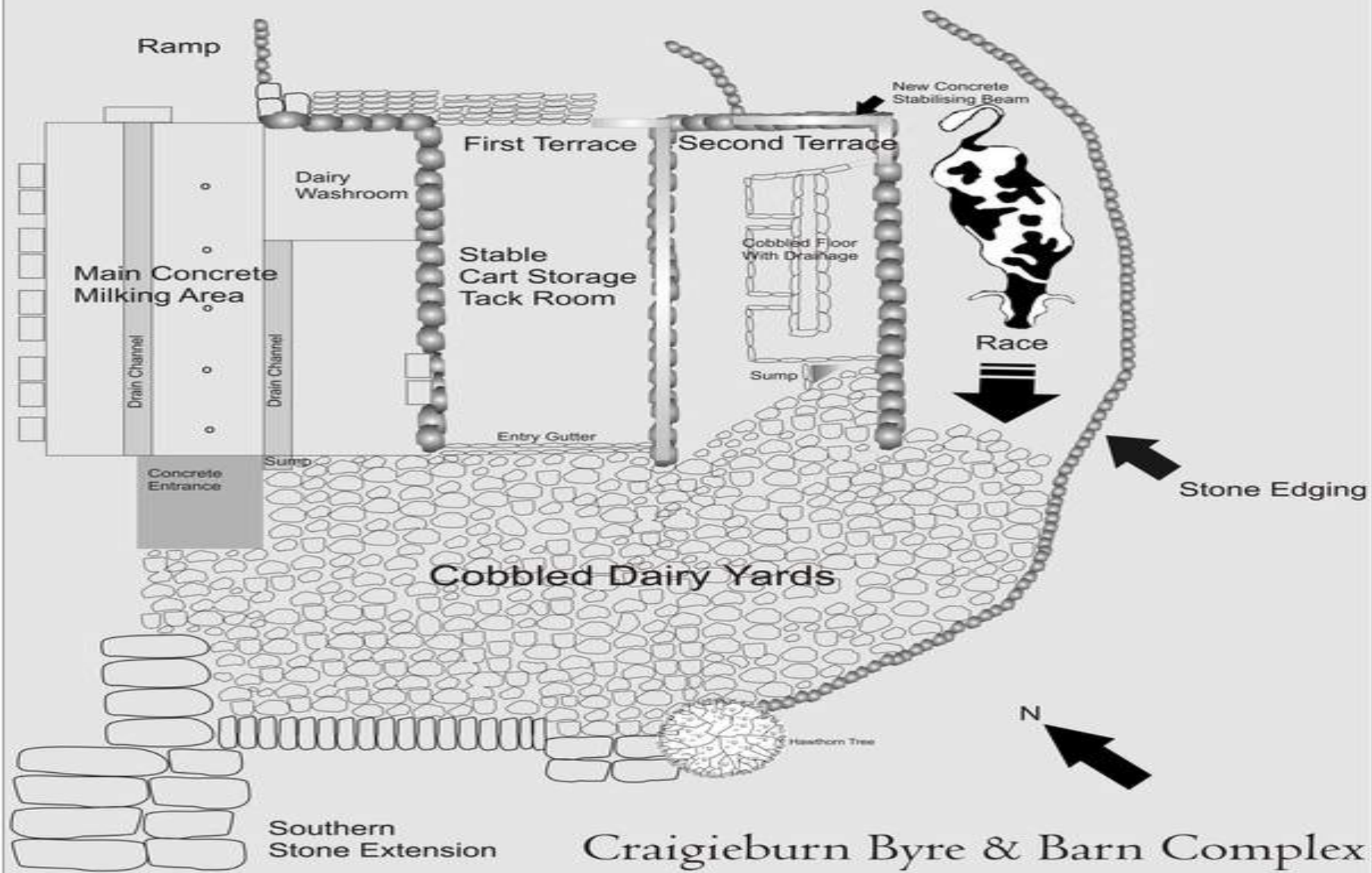
A Cultural Landscape History.











Craigieburn Byre & Barn Complex



The Little Ruin – First Arrival

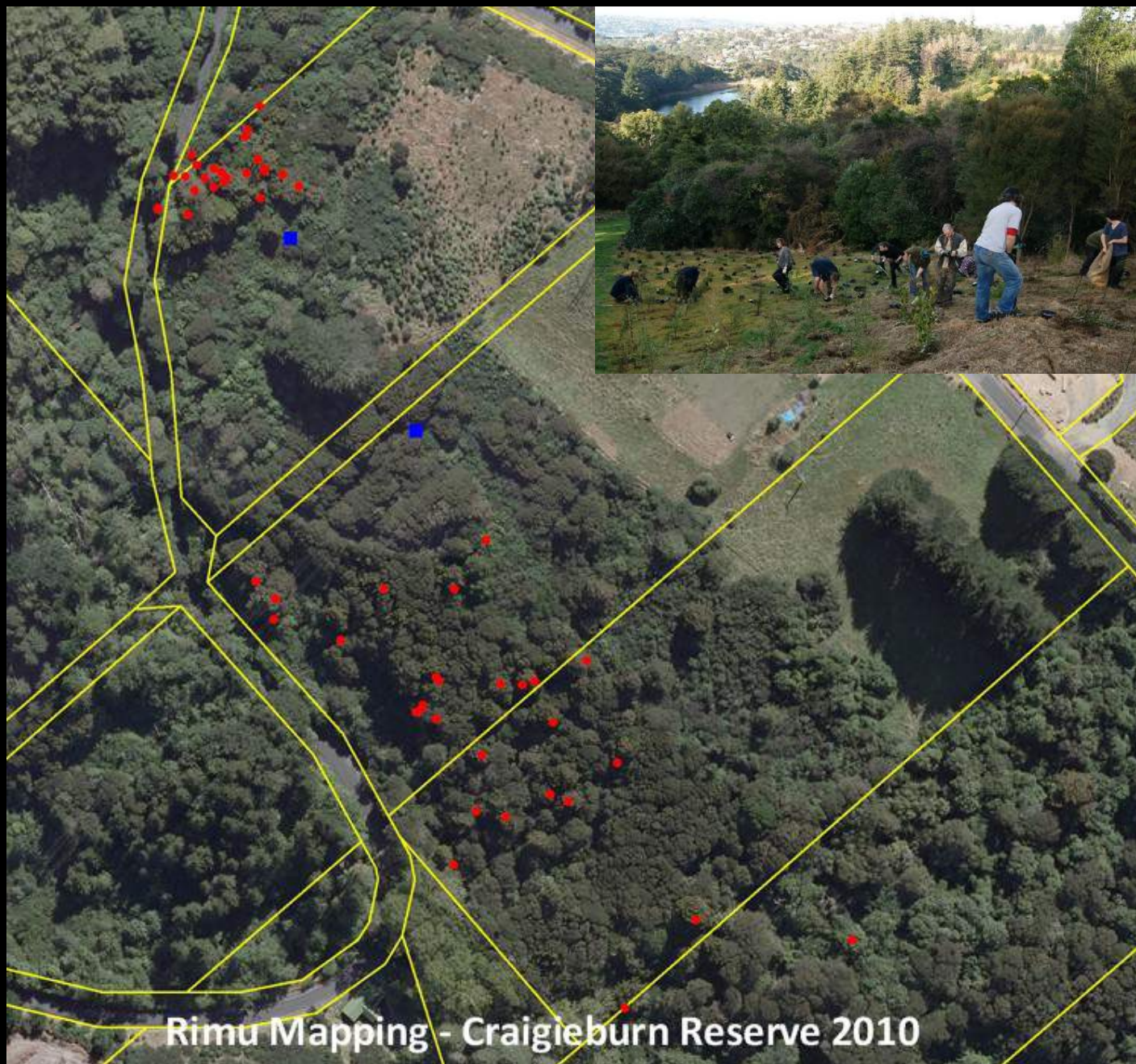












Rimu Mapping - Craigieburn Reserve 2010



The Craigieburn Rimu

Their Place in New Zealand History



There are 52 rimu on the Craigieburn Reserve which have had their circumference measured and diameter calculated ($D=C/\pi$). By counting the rings from a rimu sample recovered from a dead tree and comparing it to the living trees from Craigieburn, a reasonably accurate estimate of the age of each rimu can be calculated. The largest rimu has a diameter of 100 cms, which makes it a staggering 737 years old!

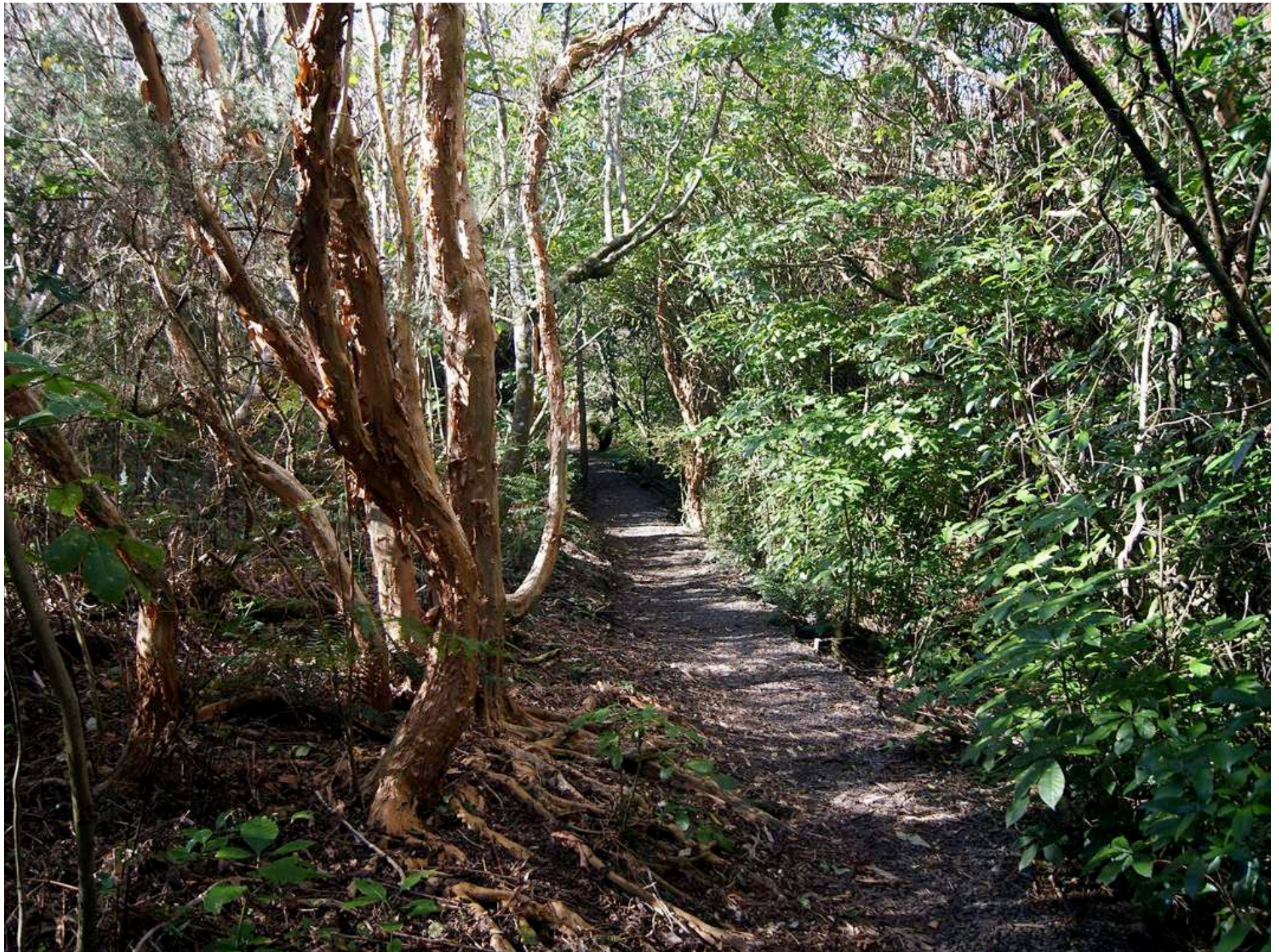


Rimu sample









Conclusions

